

Raven's Circle



Sheep Hunting Permits | **03**



CIRI Calendar Contest Winners | **04**



New Quarterly Prize Drawing | **07**

President's Message.....	2	Dividend Reminder.....	4	Call for Recipes	6
CIRI in the Community	2	In Memory	4	Save the Date: SCF Gathering	7
CIRI Newsletter Anniversary	3	Missing Shareholders.....	5	Important CIRI Dates.....	7
Descendant Spotlight.....	3	Traditional Recipe	6	CIRI Welcomes New VP.....	7
Elders' Trust Payments	4	2017 Jr. NYO.....	6	Shareholder Estates.....	8

CIRI COMPANY MAKES MAJOR ACQUISITION



➤ Portage serves as the remedial action contractor for a project in Moab, Utah, which involves moving 16 million tons of uranium tailings to a permanent disposal site 32 miles north. *Photo courtesy of North Wind.*

CIRI subsidiary North Wind Group announces the acquisition of Portage, Inc. (Portage) and all its subsidiaries. Portage and North Wind are familiar with each other – the Idaho Falls, Idaho-based companies are two of the leading small businesses in the federal environmental services market.

“The addition of Portage to the North Wind Group of companies strengthens our capabilities coast to coast and enables us to become even more competitive in our market, fostering continued growth and sustainability for North Wind,” said Christopher P. Leichtweis, North Wind Group president and CEO. “Portage has a great reputation for excellent performance. Together, we are a stronger and more capable organization.”

2016 saw North Wind Group grow to more than 850 employees. With the addition of Portage, the combined company will now employ more than 1,100 individuals, making North Wind Group one of the most robust and capable small businesses in the federal market operating in eight primary North American Industry Classification System (NAICS) codes. The newly-combined companies will operate in 35 states and three countries, with plans for continued growth in Canada and the Pacific Rim.

“North Wind’s performance has been a great benefit for our shareholders and helps make CIRI a stronger, more diversified company,” said Sophie Minich, president and CEO of CIRI. “With this new acquisition, we look forward

to continued growth while delivering the performance excellence and commitment to safety that are hallmarks of North Wind.”

ABOUT PORTAGE, INC.

Portage provides comprehensive engineering and technical solutions for environmental, infrastructure and energy projects. Founded in 1992, the company supports federal, state and local governments, in addition to private industry worldwide. Based in Idaho Falls, Idaho, Portage also has offices in Colorado, Montana, New Mexico, Ohio, Texas and Utah. For information, visit www.portageinc.com. 📧



➤ Portage is a full-service engineering and environmental remediation services company with a proven track record of success on projects for the U.S. Department of Defense and U.S. Department of Energy. *Photo courtesy of North Wind.*

SILVER MOUNTAIN CONSTRUCTION WINS MAJOR CONTRACT

The U.S. Air Force (USAF) recently awarded a CIRI subsidiary company a major contract at Alaska’s Eielson Air Force Base, near Fairbanks, Alaska. The five-year contract is for a broad range of construction services, and it comes at a pivotal time for Eielson as the base prepares to usher in the arrival of the first operational F-35 squadron. Combining advanced stealth technology with fighter speed and agility, the F-35 is the newest multi-role fighter jet for the USAF.

Awarded to Palmer, Alaska-based Silver Mountain Construction, the contract involves Simplified Acquisition of Base Engineering Requirements (SABER) work at Eielson and Clear Air Station, Alaska, which encompasses most types of property maintenance, repair and non-complex construction work. Silver Mountain will rely on a strong local workforce for support.

The Eielson base is projected to receive two squadrons of F-35s. On-base construction to prepare for the squadrons is expected to start in 2017, with the first F-35s slated to begin arriving in 2020.

“The SABER contract is for general base maintenance and construction not directly related to the F-35 build-up,” said Jared Edgar, Silver Mountain president and CEO. “However, this contract positions Silver Mountain to not only support those activities, but to foster new, long-term relationships with the Air Force and other contractors involved in the work.”

While a relatively young company, Silver Mountain already has a track record of success on projects for the U.S. military in Alaska. In May 2016, Silver Mountain completed a battalion headquarters at Fort Wainwright, an Army base just east of Fairbanks. Construction of the two-story, 20,000-square-foot building began July 2014. The project was Silver Mountain’s foray into LEED (Leadership in Energy and Environmental Design) construction, a program of the U.S. Green Building Council that recognizes buildings that use less water and energy and reduce greenhouse gas emissions.

SILVER MOUNTAIN, CONTINUED ON PAGE 05

A WORD FROM THE PRESIDENT

Sophie Minich, CIRI president and chief executive officer

Happy 2017! If you're like me, you look forward to the fresh start each New Year brings. Perhaps you aim to improve your health, better manage your finances, spend more time with family and friends or learn a new skill. Whatever your goals, I hope 2017 brings you success and much happiness.

As we enter the New Year, CIRI is working to maximize benefits from current investments, explore new opportunities and overcome challenges in certain sectors. An exciting development I'm pleased to announce is that of a new acquisition for the CIRI family of companies. On Jan. 20, our subsidiary North Wind Group closed on a transaction to acquire a company called Portage, Inc. North Wind oversees several companies primarily focused on environmental, engineering, construction and technical services and consulting. Last year, the Idaho-based company scored two large, multi-year environmental cleanup contracts: the Portsmouth Gaseous Diffusion Plant in Piketown, Ohio, and the Idaho National Laboratory near Idaho Falls, Idaho.

Since its founding in 1997, North Wind has grown to a group of companies that employ more than 800 highly-skilled professionals in more than 20 office locations throughout the country. North Wind's performance has been a great benefit to our shareholders and employees, and the acquisition of Portage portends even greater success. You can find out more by visiting www.NorthWindGrp.com.

At the Fireweed Business Center, work is starting to prepare the tenant space for Umialik Insurance Company. We are very excited Umialik will be joining us in our building, occupying the fifth floor. Coupled with existing tenant Stantec's expansion late last year, the Fireweed Business Center will be 70 percent occupied in 2017, and we continue to see strong interest from potential tenants who are

drawn to the building's quality, energy efficiency and spatial comfort. At the same time, CIRI's former headquarters at 2525 C Street remains a premier midtown Anchorage property and a strong asset in CIRI's real estate portfolio.

CIRI develops products and services to meet our business needs, and in many instances they lead to potential new sources of revenue to boost our bottom line. An example is the shareholder management system that CIRI built to handle our shareholder records. The software is uniquely structured for Alaska Native corporations, and we recently started marketing a cloud-based version to village corporations.

Another example: CIRI uses drone technology for a variety of our marketing and communications needs. Unmanned aerial vehicles, known as UAVs or drones, are remote-controlled flying robots that can be used for aerial photography, videography and inspection. Drone operators are certified by the Federal Aviation Administration – the same national authority that issues pilot licenses. In addition to utilizing drone technology for its own purposes, CIRI is now marketing drone services to other businesses. Our new company, Arctic Aerial, is poised to work on a range of projects, including real estate, surveying and mapping, land imaging, inspections, event coverage and more. Find out more at www.ArcticAerial.com.

Shareholders in Alaska may have seen recent news headlines lamenting the state of the Alaska economy. Last month, an article in the Alaska Dispatch News stated that Alaska is facing a recession, with job losses accelerated by low oil prices. Unfortunately, CIRI is not immune to the financial challenges facing Alaska and the oil industry, largely due to falling oil and commodity prices. Our subsidiary Cruz Energy Services has



had a difficult year in North Dakota, and our private equity portfolio has also felt the impact of low commodity prices. It is another reminder of the need to maintain a diversified portfolio to weather market-specific fluctuations.

As always, CIRI is actively pursuing business opportunities that will allow us to deliver strong financial results. The future is yet unwritten, but I'm excited about CIRI's opportunities as we embark on a new year working to deliver strong and consistent returns to you, our shareholders.

Warm regards,

Sophie Minich

A Commitment to Community

CIRI believes in helping to build a strong and safe community where opportunities and prosperity is available for all. CIRI recognizes its responsibility to support the organizations that fight hunger, poverty and homelessness, and promote education.

CIRI is committed to social responsibility. It's part of our mission. CIRI helped to establish and supports a family of nonprofit organizations that provide health care, housing, employment, education, access to justice and other social and cultural enrichment services for Alaska Natives and others. To learn more about these organizations, please visit our [nonprofits page](#).

CIRI also supports various charitable organizations in the Cook Inlet region and participates in fundraising events throughout the year. Through a combination of strategic relationships with local nonprofits, our business partnership school, the annual CIRI Golf Classic, volunteer activities and other community investments, CIRI strengthens the health and well-being of its neighbors.

CIRI and its team of dedicated employees play an active role in improving their community. CIRI employees give directly to charities, serve on the boards of local community organizations and participate in CIRI-led campaigns. An active community leader in the annual United Way of Anchorage campaign, CIRI and its employees annually pledge more than \$100,000 to the organization.

To learn more about CIRI's philanthropy policy or to apply for a donation, visit our [giving guidelines page](#).

[CIRI'S GIVING GUIDELINES](#)

CIRI in the Community

CIRI in the COMMUNITY

Check out CIRI's new 'In the Community' webpage!

Recognizing its role in supporting the organizations that promote education and fight hunger, poverty and homelessness, CIRI takes its role as a corporate citizen seriously. "We feel a strong responsibility to help have a community that is safe—our families are safe, our children are fed, they're ready to go to school and learn every day," said CIRI President and CEO Sophie Minich.

Visit CIRI's new "In the Community" webpage to learn about CIRI's philanthropy guidelines and giving policy; the latest community-minded news; and the wide variety of cultural and social-service programs the company supports, such as Alaska Public Media, Bean's Café/The Children's Lunchbox, Food Bank of Alaska, Muldoon Elementary School and United Way of Anchorage.

"This is our home. We want to make sure there is prosperity and opportunity for all," Minich said. "That's just who we are."

www.ciri.com/our-corporation/in-the-community/

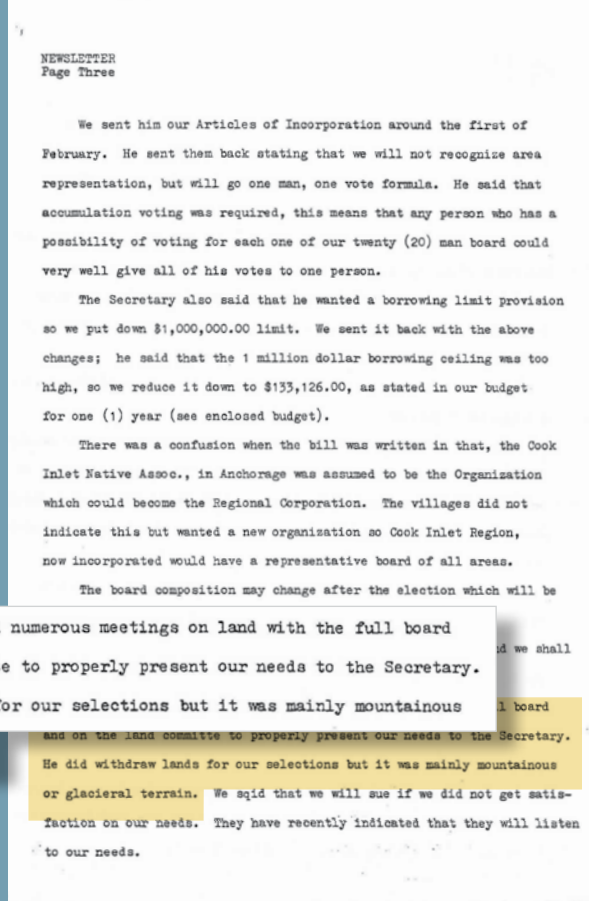
45TH ANNIVERSARY OF CIRI'S SHAREHOLDER NEWSLETTER

This month CIRI celebrates the 45th anniversary of its shareholder newsletter. From the beginning, CIRI has prided itself on keeping its shareholders informed about the current state and future vision of the corporation. But the newsletter didn't always look the way it does now!

In 1972, the newsletter consisted of five type-written sheets of meeting notes. A major topic was the 1.25 million acres of land CIRI was to receive as part of the Alaska Native Claims Settlement Act (ANCSA). Much of the quality land in the Cook Inlet region was already spoken for by state or private interests, except for federal withdrawals, like the Kenai Moose Range and military reservations. "Mainly mountainous or glacial terrain," the notes read.

According to the newsletter, the lone appointee from the Joint Federal-State Land Use Planning Commission for Alaska "came to Anchorage wanting to know what our region looked like. He got a plane from the B.L.M. (Bureau of

CIRI NEWSLETTER 45TH ANNIVERSARY, CONTINUED ON PAGE 08



APPLY NOW FOR SHEEP HUNTING PERMITS

About 200 miles west of Anchorage, near Farewell, lie CIRI's two townships of mountainous property. As in previous years, recreational use permits will be issued for access to portions of the Farewell area for Dall sheep hunting in 2017.

Access permits to CIRI lands near Farewell are awarded through a random drawing. The general public may apply for access; however, CIRI shareholders and their immediate family members, confirmed descendants and CIRI employees are drawn in a separate priority lottery, ensuring first choice of hunting periods. There is no charge to apply, and permits are issued free of charge.

CIRI is pleased to make access permits available by lottery for the Unit 19 Youth Hunt, Aug. 1-5, 2017. Access permits during the youth hunt will be available through the same lottery system as

the general hunt, but they are limited to CIRI shareholders, confirmed descendants and children of CIRI employees.

Due to lower numbers of rams observed on the property in recent years, CIRI is making minor changes to the 2017 Farewell hunter access program. As in past years, hunters will access the area via Veleska Lake to the north and Smith Lake to the south. Access permits will be issued for up to 10 days, nine nights. Each hunting party (up to four individuals) will be limited to taking two legal rams. In previous years, each hunter in a party was permitted to take a sheep.

For additional details and to complete the online permit application, visit www.ciri.com/our-lands/permitting/.

DESCENDANT SPOTLIGHT



PHOTO COURTESY OF SAM SCHIMMEL

Sam Schimmel

"I want to be a lawyer, so let's try this out."

Those were Sam Schimmel's thoughts when he decided to apply to 2016 Color of Justice (COJ). A CIRI descendant originally from St. Lawrence Island and now living in Seattle, Sam spends his summers in Alaska berry picking, fishing, hunting and engaging in other subsistence activities. "In the villages, you see a lot of injustice. I want to fight that," Sam said.

The COJ program aims to get female and ethnic minority students interested in the legal profession. CIRI's Bruce Anders, vice president and general counsel, has been part of the program for several years and immediately noticed the lack of rural and Alaska Native students participating. In 2015, CIRI resolved to change this.

"We launched an effort to bring motivated Alaska Native students from rural parts of the state to Anchorage to experience COJ, calling it the Color of Justice Rural Alaska Initiative," Anders said. CIRI worked closely with the other 11 regional corporations, the Alaska Native Justice Center and COJ organizers to fulfill the initiative. Thanks to the flexibility of the Alaska Court System and COJ staff, half of the 2016 COJ student population was reserved for 40 rural Alaskan students who were flown to Anchorage free of charge to participate in the program. One of those students was Sam.

At COJ, "Sam immediately distinguished himself from the other students, rural and urban, all of whom were intelligent and motivated kids," Anders said. "Already knowledgeable about many intricacies in the law, he attacked Color of Justice with a thoughtful, inquisitive approach, intent to learn as much as he could while helping other students who sought his leadership."

"Color of Justice was really great," Sam said. "One highlight was meeting (Former Chief Justice of the Alaska Supreme Court) Dana Fabe. Attending the two-day program and talking with her, it really cemented the idea I want to go into law." Sam also found the program practically useful. "I'm in a mock-trial class now and they are taking months to cover what we learned in two days."

Sam describes himself as belonging to three communities. "I spend part of the year in Alaska

DESCENDANT SPOTLIGHT, CONTINUED ON PAGE 06

ELDERS' SETTLEMENT TRUST PAYMENTS

First quarter Elders' Settlement Trust payments of \$450 will be mailed or directly deposited on Friday, March 10. Direct deposit and address change deadlines may be found at www.ciri.com/shareholders/benefits/dividends-and-distributions/distribution-schedule/.

Shareholders with Genek portal accounts may cancel an existing direct deposit instruction and submit address changes online via the portal.

Alternatively, shareholders may visit www.ciri.com or call Shareholder Relations at (907) 263-5191 or (800) 764-2474 (CIRI) for forms and information on record updates.

DIVIDEND REMINDER

CIRI's dividend policy states that the total dividend payment to shareholders in any given year is equal to 3.50 percent of total shareholders' equity, calculated as of December 31 of the prior year.

Dividend amounts are typically able to be confirmed shortly before the date of record for the first quarter dividend, which, this year, falls on Thursday, March 23. As in the past, once available, dividend amounts will be announced on the dividend hotline, which may be reached at (907) 263-5100 or toll free at (800) 764-2435 (CHEK), and the website distribution schedule will be updated.

Visit the CIRI website for information on CIRI's dividend policy and 2017 payment dates.

IN MEMORY

RAYMOND CONSTANTINE, 55

Raymond Constantine passed away Oct. 21, 2016, at the Alaska Native Medical Center in Anchorage. Mr. Constantine was born April 28, 1961, in Tyonek, Alaska. He is remembered by his family as a loving, hardworking, helpful and compassionate man who enjoyed cooking, camping, fishing and watching basketball. He is survived by his wife, Charlene; children, Angie, Amanda, Raymond Jr. (Ruth), Roman and Ricky; and grandchildren, Jonathan, Desirae, Ruben, Adrian and Mariah.

CLIFFORD A. KELLY, 64

Clifford A. Kelly passed away Nov. 7, 2016, at home in Soldotna, Alaska. Mr. Kelly was born Nov. 2, 1952, in Seward, Alaska. He is survived by his wife, Claudia Kelly; children, Kim, Sabrina, Carmen, Jamie, Jason and Aaron; mother, Doris Kelly; brother, Carl Kelly; and sisters, Gail and Connie.

MICHAEL B. LAMONT, 58

Michael B. LaMont passed away Nov. 11, 2016, at home in Fleming, Colo. Mr. LaMont was born Aug. 25, 1958, in Fairbanks, Alaska. He is survived by his siblings, Gerald LaMont, Jeffrey LaMont and Linda Clifford; niece, Scarlet LaMont; and nephews, Cole LaMont, Gerald "Bobby" LaMont, Clifton LaMont and Jacob LaMont.

Condolences

Jean Viola Hansen, 91
Richard Alan Hartwig, 77
Francis Dale Hoyt Jr., 55
Mary Helen Koenigs, 91
David Leroy Mitchell, 78
Deborah Ann Sly, 60
Glenn Randall Steed, 60
Joshua Snooky Titus, 31

CIRI CALENDAR PHOTO CONTEST WINNERS

PHOTOGRAPHER	PHOTO LOCATION	G. Chet King	Turnagain Arm, Alaska
A. Arnold Hague	Whittier, Alaska	H. Christine Donnelly	Palmer, Alaska
B. Justin Sandoval	Cooper Landing, Alaska	I. Chet King	Anchorage, Alaska
C. Ariana Smith	Eklutna Lake, Alaska	J. Mary Lillo	Wasilla, Alaska
D. Ariana Smith	Seward, Alaska	K. Debra Ahern	Anchorage, Alaska
E. Jason Moore	Knik, Alaska	L. Charity Jasper	Ketchikan, Alaska
F. Ariana Smith	Whittier, Alaska	M. Christine Donnelly	Alaska





› The SABER contract awarded to Silver Mountain will entail property maintenance, repair and non-complex construction work. Photo by Jason Moore.

“Silver Mountain is proud to join the team at Eielson and help prepare for this important development,” Edgar said. “We look forward to developing a strong partnership with the Air Force and delivering excellent quality and value in the work we perform.”

ABOUT SILVER MOUNTAIN CONSTRUCTION

Silver Mountain is a subsidiary of CIRC-owned CIRC Services Corporation, which also owns Weldin Construction and ANC Research & Development. Silver Mountain provides comprehensive construction services specializing in military fueling projects, process piping and civil/underground construction projects for local, state and federal government agencies, as well as the private sector. Visit www.silvermountainconstruction.com for more information. 📄



› The F-35 is the newest multi-role fighter jet for the USAF.

MISSING SHAREHOLDERS

The following CIRC shareholders do not have a current mailing address on record. **When CIRC mail is returned as undeliverable, the distributions are held and the shareholder does not qualify to participate in any prize drawings until the address is updated.** Shareholders with Qenek portal accounts may update their addresses online. Alternatively, shareholders may visit CIRC’s website or call Shareholder Relations at (907) 263-5191 or (800) 764-2474 for address change forms and information.

(As of 01/16/2017)

- | | |
|-----------------------------|----------------------------|
| Byron Keith Abell | Chester William Koonuk Jr. |
| Edgar Ailak | Autumn Nicole Krier |
| Gerald Evan Alexie | Judy Lammersen |
| Matthew Jacob Anahonak | Lorna Kay Larsen |
| Egan Hugh Askay | Karina Jean Lorenzo |
| Eloise V. Beck | William Dean Luttrell Jr. |
| Thomas Michael Bellinger | Jack Joseph Milligan |
| Joseph Andrew Blasy | Shaun Michael Moore |
| Richard Kenneth Bright | Brian Lee Morissette |
| Steven Patrick Bright | Betty Loretta Morris |
| Diana Marie Call | Karina Eleanor Anne Munson |
| Lawrie W. Campbell Jr. | Forrest James Nayukok |
| Susan Faye Canipe | Alexander Lee Neesmith |
| Mercedes Yazmin Caudillo | Hoyt Leonard Ogle |
| Gordon Walter-Wesley | Tracy Day Osborn |
| Cheemuk | Bryan Lee Outwater |
| Kristin Lee Clancy | Colleen Ida Patrick |
| Salina Lynn Cooper | Norma Propst |
| Julie Ann Cox | Barbara N. Redington |
| Sharon Lee Culhane | Kenneth Warren Rice III |
| Kamakana Charles- | Melanie Brook Ritter |
| Nukapigak Danner | Charles Agustus Roehl III |
| Tammie Outwater Day | Dale Edward Rude |
| Gary Allen Deubert | William Jack Schneider Jr. |
| Christy Lynn Downs | Maryah Dorothy Showalter |
| Mario Lanza Dyer | Shane Allen Shumaker |
| Samuel Erwin | Foster P. Simmonds Sr. |
| Elizabeth MSH Evon | James Earl Smith |
| Rachel B. Fisk | Jedediah Ian Smith |
| Ernest Edward Fortenberry | Veronica Ann Takeuchi |
| Matthew Lee Fox | Otto R. Thiele III |
| John Andrew Fratis | Eda Wendy Thomas |
| Anthony Lane Fry | Jeffery Leo Trenton |
| William Joseph Fuller | Charmaine Lavonne Triplett |
| Robert Wayne Galvan | Martin Sean Tucker |
| George Julius Gardner III | Alice Marie Umetsu |
| Susan Helene Gonzalez | Terilyn Irene Wamser |
| Jessica Marie Grubbs | Hayli Melissa Ward |
| Jade Ariane Grunert | Anthony Wayne Waterbury |
| Sher Lee Hadfield | Ralph Lee Watson |
| Christine Marie Hall | Larry Wayne Wells II |
| Christopher James Hall | Rosemary Elizabeth Wells |
| Ronald Lee Harper | Melford Nunoolik Nupeauk |
| Annie Marie Heinrich | Wesley Jr. |
| Joseph Timothy | Isaac Jesse Westcoast |
| Henderson-Shook | Andrew McKennon White |
| Jason Charles Honeycutt | Jordan Brando Wik |
| Suzanne Carlena Hutchens | Sarah Joy Wild |
| Hannah Isaac | Vincent Dale Wilkening |
| Harold William Johns | Quinn Joseph Wilson |
| Brian Wayne Jones | William R. Wolf |
| Kodi Brittny-Benedict Jones | |
| Branden J. Jordon | |
| Rollin Isaac Cory Kankanton | |
| David Michael Karabelnikoff | |
| Julie Marie Kenick | |
| Simon Koenig Jr. | |
| Wayne Lee Komakhuk | |



TRADITIONAL RECIPE: MOOSE MEAT PEROK



This is the recipe used at the CIRI and The CIRI Foundation Friendship Potlatches each fall.

Start to finish: 75 minutes (30 minutes active)

Servings: Approximately 6

Ingredients:

- 2 frozen pie crusts, thawed
- 1 pound ground moose meat
- 1 pound ground beef
- 3 cups long-grain white rice, partially cooked
- 1-2 shakes soy sauce, or to taste
- ½ celery stalk, chopped
- ¼ large onion, diced
- 1-2 eggs, beaten
- 1-2 shakes Worcestershire sauce
- ½-1 teaspoon lemon juice
- 1 package beef au jus mix
- 1-2 shakes garlic powder
- 1-2 shakes onion powder
- 1¼ cups water
- Salt and pepper to taste

Directions:

1. Heat oven to 375 F.
2. Place rice in large bowl and cover the top layer with soy sauce (1-2 shakes or to taste).
3. Mix in celery, onion, eggs, Worcestershire sauce, lemon juice, garlic powder, onion powder, beef au jus mix, and salt and pepper.
4. Combine rice mixture with moose meat, beef and water.
5. Place in 9x13-inch pan.
6. Cover with pastry crust. Trim overhang and crimp edges.
7. Bake 45 minutes or until crust is golden brown.



2017 JUNIOR NYO GAMES

Feb. 24-26

Wells Fargo Sports Complex at UAA
2801 Spirit Drive, Anchorage

Visit www.citci.org/event-programs/nyo-games for more information.

CALLING ALL HOME COOKS: SEND US YOUR RECIPES!

Do you have a favorite recipe to share? The Raven's Circle is looking to feature recipes that incorporate the plants, berries, fish and animals of the Cook Inlet region, traditional Alaska Native foods or a contemporary twist of your own. We welcome all types of recipes, from soups and salads to main dishes and desserts. By sharing your favorite dishes, your recipe will reach thousands of readers.

How to submit your recipe

Recipes may be emailed to info@ciri.com. Each submission should include:

1. Your full name
2. Name of the dish
3. Type of dish (main dish, side dish, etc.)
4. Brief description of the dish
5. Ingredients (including quantities)
6. Method/directions
7. Total cook time (approximate)
8. Number of servings
9. High-resolution photo of the completed dish, origin of the recipe, tools and equipment needed (optional)

Credit to the author will be given for all published photos and recipes.



DESCENDANT SPOTLIGHT, CONTINUED FROM PAGE 03

with my relatives – half are Kenaitze Indian from the Kenai Peninsula and the other half are Siberian Yup'ik from St. Lawrence Island. The other part of the year I go to school in Washington State, where I have no relatives and no Alaska Native classmates." Sam is connected to CIRI through his grandfather, shareholder Russell Wilson.

He laments the barriers young Alaska Native people face in connecting in a meaningful way with their culture and heritage. "In Gambell, (young people) trade tradition for drugs, alcohol and video games. In Kenai, they try to be popular and fit in socially. Outside Alaska, they're alone with tradition. Losing or not having tradition leaves an empty space that gets filled too often with poor choices. I see that more than anything else in each of my communities."

Not one to sit idly by, this high-school junior works to effect change "to the maximum extent possible by helping Alaska Native people achieve justice and sovereignty, and retain cultural identity, in a fast-paced and evolving world," Anders said.

In addition to COJ, Sam served as a youth panelist for the Western Region Generation Indigenous Youth Conference, where he joined U.S. Sen. Lisa Murkowski in signing a bill to create a commission for Alaska Native children. He was chosen as a youth delegate for the Tribal Nations Conference where he spoke before his Native peers about environmental and climate-change challenges facing Arctic communities. National Public Radio sought him out to discuss the impact of suicide in Alaska Native communities. And he met with U.S. Secretary of Agriculture Tom Vilsack to advocate for government support during subsistence emergencies.

Last summer, Sam worked at the Smithsonian Institution in Washington, D.C., on a slide collection containing biological and botanical research on St. Lawrence Island. In addition to organizing and cataloging the slide collection, he

also conducted additional research when he returned to Gambell for the summer.

For his dedication to improving the health, safety and overall well-being of young Native peoples, in late 2016 Sam was named to the Center for Native American Youth's (CNAY) 2017 class of Champions for Change. It's an honor similar to the one bestowed upon Greg Razo, a CIRI shareholder and company executive, in 2016.

This month, Sam will travel to Washington, D.C., for a week-long series of recognition events and meetings. "This year, we received an overwhelming number of applications for the Champions of Change program," retired U.S. Sen. Byron Dorgan, who founded the CNAY, wrote in a letter. "Sam was selected as a Champion because of the quality of his application and the tremendous impact of his efforts."

Giving a voice to his peers, connecting family and community and preserving the lands, culture and traditions of his Alaska Native heritage – these are Sam's passions. "Sam is a leader and will affect change for the better wherever he goes," Anders said. "His vision is boundless, his energy inexhaustible."

About 2017 CIRI Color of Justice

CIRI is pleased to announce that, based upon the success of the national Color of Justice program, it will hold a similar Color of Justice program exclusive to CIRI shareholders and descendants in grades 9-12. The CIRI COJ will feature hands-on learning activities designed to promote awareness about our legal system and potential careers in law and the judiciary.

Anders sees the CIRI COJ program as a powerful tool to expose Alaska Native students to a vastly underrepresented legal profession. "Alaska Native people make up about 14 percent of the Alaska population," he said. "There is no reason they shouldn't be at least equally represented in the legal profession – in the bar and on the bench."

DESCENDANT SPOTLIGHT, CONTINUED ON PAGE 08

SAVE THE DATE

Southcentral Foundation 20th Annual Gathering

10:30 a.m.-3:30 p.m.
Saturday, Feb. 4
Egan Civic and Convention Center
555 West Fifth Avenue, Anchorage

Celebrate health and wellness and learn more about services available at Southcentral Foundation and in the community. Activities at this free, family-friendly event include games, face painting, live entertainment and an art sale. For more information visit www.southcentralfoundation.com.



**DONATE THROUGH
PICK.CLICK.GIVE.
BEGINNING JAN. 1**



This year's Permanent Fund Dividend (PFD) filing period runs Jan 1-March 31. A unique giving tradition, Pick.Click.Give. allows Alaskans to share their PFDs with the causes they care about most. Simply select the organization of your choice from a searchable online list, then designate it to receive all or a portion of your PFD. In October, that amount will automatically be deducted from your PFD.

Among the eligible 2017 Pick.Click.Give. organizations are five CIRI-affiliated nonprofits: Alaska Native Heritage Center, Alaska Native Justice Center, The CIRI Foundation, Koahnic Broadcast Corporation/KNBA 90.3 FM and Southcentral Foundation.

Visit www.pfd.alaska.gov for additional information.

IMPORTANT CIRI DATES

February 16, 2017	Elizabeth Peratrovich Day
February 20, 2017	President's Day; Elizabeth Peratrovich Day observed: CIRI offices closed
February 21, 2017	CIRI Board Write-In Candidate Packet Deadline: noon
February 24, 2017	Color of Justice for CIRI shareholders and confirmed descendants (Anchorage)
February 27, 2017	Deadline to sign up for direct deposit for the first quarter Elders' Settlement Trust distribution: 3 p.m.
March 2, 2017	Address change and cancel direct deposit deadline for the first quarter Elders' Settlement Trust distribution: 3 p.m.
March 10, 2017	First quarter Elders' Settlement Trust distribution
March 13, 2017	Deadline to sign up for direct deposit for the first quarter dividend and resource revenue distribution: 3 p.m.
March 22, 2017	Address change and cancel direct deposit deadline for the first quarter dividend and resource revenue distribution: 3 p.m.
March 27, 2016	Seward's Day: CIRI offices closed
March 31, 2017	First quarter dividend distribution

CIRI WELCOMES NEW VICE PRESIDENT OF BUSINESS DEVELOPMENT AND OPERATIONS

Please join us in welcoming Thom Holder as CIRI's new vice president, Business Development and Operations.

Thom comes to CIRI from a 22-year career at Intel Corp. where he managed venture equity investments, merger and acquisition transitions, and product management and operational leadership roles. In his new role at CIRI he will help plan and oversee the Company's investment strategy, and guide operations at CIRI and its subsidiaries.

Thom has spent his adult life in Boston, Munich, San Francisco and Portland, Ore. He returns to Alaska after having lived in Glennallen as a child. Thom is a veteran of the U.S. Marine Corps and holds a Bachelor of Arts in finance law from Portland State University.

Welcome, Thom! 🏠



NEW QUARTERLY DRAWINGS FOR AN ECHO DOT!

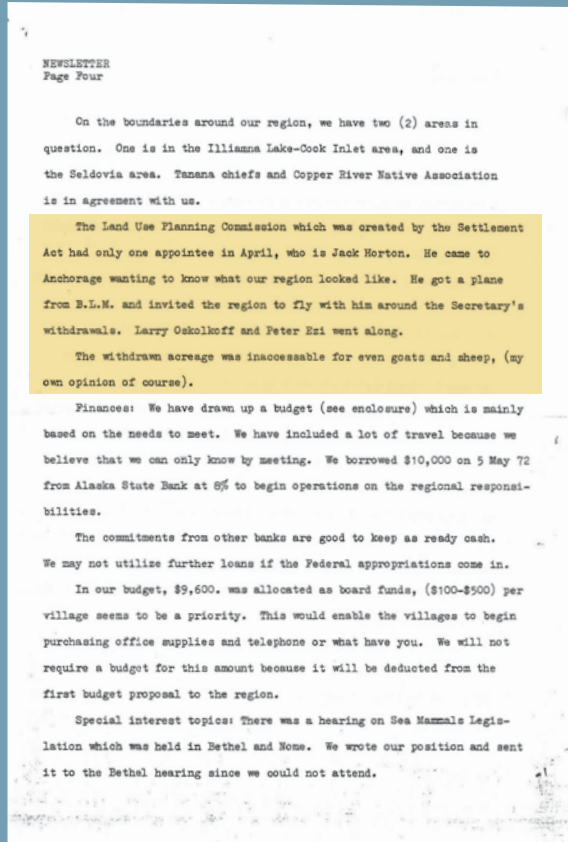


CREATE A QENEK ACCOUNT OR ACCESS YOUR EXISTING ACCOUNT BY MARCH 31 TO BE ELIGIBLE FOR THE FIRST-QUARTER DRAWING

Qenek is CIRI's free, secure, online shareholder portal through which shareholders may access up-to-date information about their CIRI shares and dividends and perform certain tasks online. Qenek also helps to reduce CIRI's carbon footprint.

To increase usage, drawings for an Echo Dot will take place for the quarters ending March 31, June 30, Sept. 30 and Dec. 31 from the names of all shareholders with Qenek accounts. If the selected individual has not accessed the Qenek account during the quarter or if the CIRI address is not current, another winner will be selected.

To register or access your existing Qenek account, visit <https://Qenek.ciri.com>.



➤ Ezi Family Fish Camp, c. 1945 or 1946, Point Woronzof, Alaska. Photo courtesy of CIRI shareholder Alberta Stephan.

Land Management) and invited the region (representatives from CIRI) to fly with him around the Secretary's (U.S. Secretary of the Interior) withdrawals. (CIRI Board members) Larry Oskolkoff and Peter Ezi went along. The withdrawn acreage was inaccessible for even goats and sheep."

Four years later, rounds of negotiations with the state and federal governments led to the Cook Inlet Land Exchange, which enabled CIRI to acquire valuable land on the Kenai Peninsula and bid on out-of-region land selections, rather than settle for "mountaintops and glaciers." Those parcels would help bolster CIRI's financial foundation and make it possible for the company to weather tough times, continue to grow and eventually become one of Alaska's most successful Alaska Native corporations.

Learn more about CIRI's land story at www.ciri.com/our-lands/cirilandstory.



P.O. Box 93330
Anchorage, Alaska 99509-3330



First-Class Mail
U.S. Postage
PAID
Permit No. 257
Anchorage, AK

CIRI CONTACT INFORMATION

CIRI Headquarters
725 E. Fireweed Lane, Suite 800
Anchorage, Alaska 99503
Tel. (907) 274-8638
www.ciri.com

Shareholder Relations
Tel. (907) 263-5191 or (800) 764-2474
Fax (907) 263-5186



Shareholder Participation Committees
www.ciri.com/spc

Submit your stories & ideas to info@ciri.com

EDITOR: CARLY STUART | LAYOUT AND DESIGN: YUIT COMMUNICATIONS | © CIRI, 2017
COVER PHOTO BY JAMES M. PETROFF

CIRI BOARD OF DIRECTORS

Thomas P. Huhndorf, *Yup'ik*
Chair
Roy M. Huhndorf, *Yup'ik*
Chair Emeritus
Douglas W. Fifer, *Tlingit*
Vice Chair

Jeffrey A. Gonnason, *Haida*
Secretary
Michael R. Boling, *Athabaskan*
Treasurer
Louis "Lou" Nagy Jr., *Yup'ik*
Assistant Secretary

Penny L. Carty, *Aleut*
Assistant Treasurer
Hallie L. Bissett, *Athabaskan*
Margaret L. Brown, *Yup'ik*
Rolf A. Dagg, *Yup'ik*
Erik I. Frostad, *Athabaskan*

Robert E. Harris, *Iñupiaq*
Katrina M. (Dolchok) Jacuk, *Aleut*
Ted S. Kroto Sr., *Athabaskan*
Patrick Marrs, *Aleut*

SHAREHOLDER ESTATES

Also Missing

When CIRI shareholders pass away, gathering the information necessary to settle the stock estate is often a difficult task and may delay settlement. CIRI is looking to contact the individuals listed below in connection with the following estates:

- Estate of Thomas William Highsmith – Tonya Lorraine Highsmith
- Estate of Lily Mae Marshall – Kamette R. Myers and Christian James Marshall
- Estate of Richard Lloyd Sargent (aka Lloyd Richard Sargent) – Derek Bernard Sargent and John Michael Sargent Clark
- Estate of Leonard Turgeon – Ashley Moore
- Estate of Lawrence M. Wade – Alex H. Wade

If your name appears above or you know the whereabouts of any of the individuals listed above, please contact CIRI Probate at (907) 263-5191 or toll free at 1-800-764-2474, and select option 4.

DESCENDANT SPOTLIGHT, CONTINUED FROM PAGE 06

The CIRI COJ program will be held Friday, Feb. 24, 2017 (an in-service/no-school day for the Anchorage School District) at the Fireweed Business Center in Anchorage. If there is sufficient interest from Kenai-based students, a second Kenai version of the CIRI COJ program will be held Friday, Feb. 10, 2017 (an in-service/no-school day for the Kenai Peninsula School District) at the Kenai Quality Inn.

Applications must be received by 5 p.m. on Friday, Feb. 1, 2017. This year, one lucky COJ attendee will win an Apple iPad Air 2!

To apply, visit www.ciri.com/shareholders/descendants/color-of-justice/.