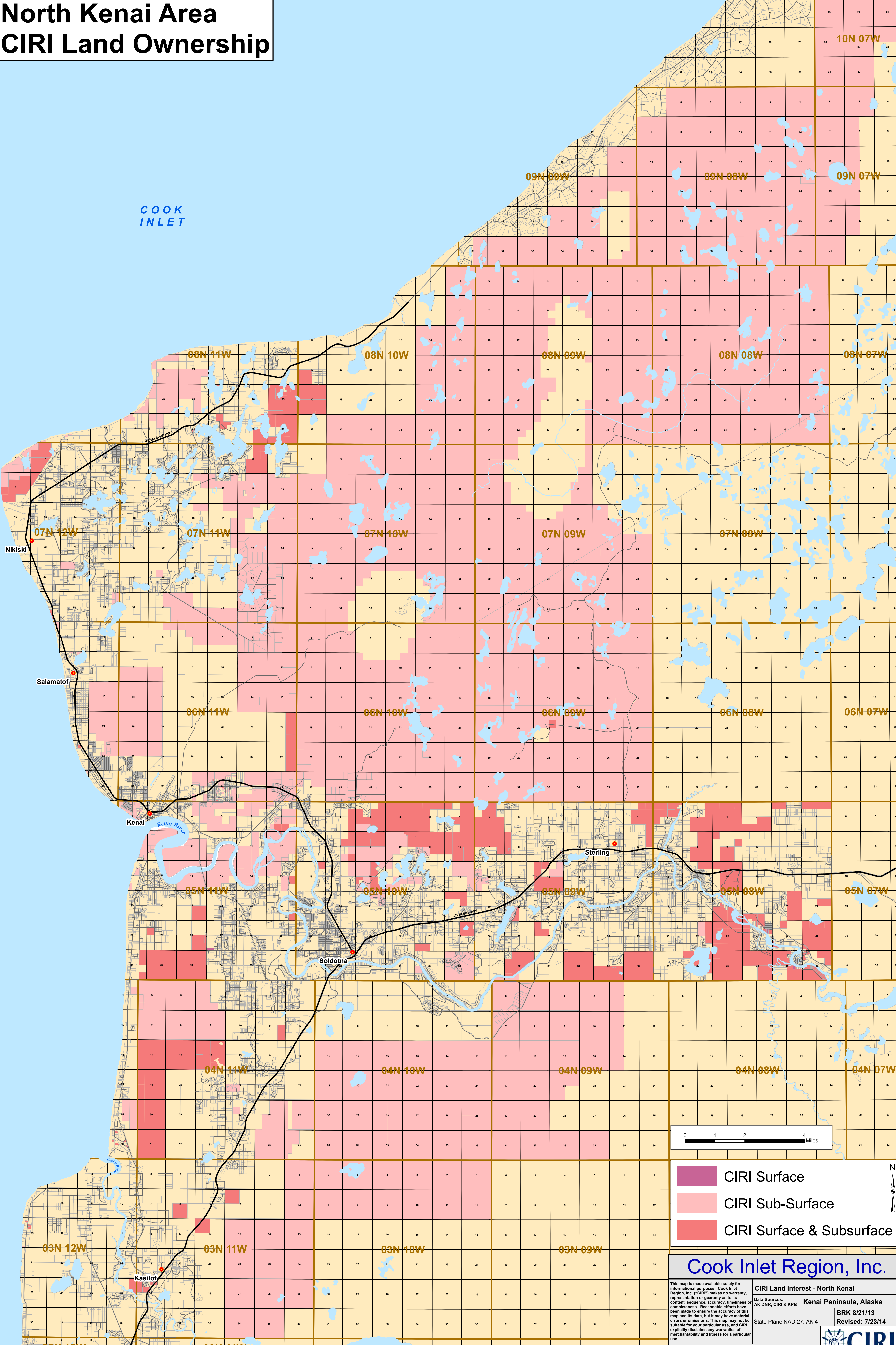


# North Kenai Area CIRI Land Ownership



COOK  
INLET

10N 07W

09N 09W

09N 08W

09N 07W

08N 11W

08N 10W

08N 09W

08N 08W

08N 07W

Nikiski

Salamatof

Kenai

Sterling

Soldotna

Kaslof

0 1 2 4 Miles

- CIRI Surface
- CIRI Sub-Surface
- CIRI Surface & Subsurface

**Cook Inlet Region, Inc.**

This map is made available solely for informational purposes. Cook Inlet Region, Inc. ("CIRI") makes no warranty, representation or guaranty as to its content, sequence, accuracy, timeliness or completeness. Reasonable efforts have been made to ensure the accuracy of this map and its data, but it may have material errors or omissions. This map may not be suitable for your particular use, and CIRI explicitly disclaims any warranties of merchantability and fitness for a particular use.

**CIRI Land Interest - North Kenai**  
 Data Sources: AK DNR, CIRI & KPB  
 Kenai Peninsula, Alaska  
 BRK 8/21/13  
 Revised: 7/23/14  
 State Plane NAD 27, AK 4

North Kenai CIRI Land Status 24X36.pdf