



RAVEN'S CIRCLE

EARLY SUMMER 2024 // CIRI SHAREHOLDER AND DESCENDANT NEWSLETTER



The Nakenaghch' Sutdu'a traveling exhibit includes objects and artifacts, educational signage, archival photos and videos, and a virtual reality experience. Photo courtesy of ANHC.

CIRI AND ANHC LAUNCH TRAVELING CULTURAL EXHIBIT

NAKENAGHCH' SUTDU'A BRINGS UPPER COOK INLET CULTURE AND HISTORY TO SHAREHOLDERS AND DESCENDANTS

A Shareholder dons the white headset and picks up the two-touch hand controllers. After a moment, she is immersed in an imagination-defying virtual world, transported back in time. "I actually found the experience to be emotional," she says, once she removes the headset and takes a moment to readjust to her surroundings. "I'm Inupiaq, not Dena'ina; my family enrolled with CIRI because we were living in Anchorage (when the Alaska Native Claims Settlement Act passed). We're originally from Point Lay, on the Chukchi Sea coast. But the scenes depicted are universal to Alaska Native people. It was like getting a glimpse into the world my ancestors inhabited."

The virtual reality (VR) experience is but one component of the Nakenaghch' Sutdu'a (Dena'ina for "Our Traditional Stories and Lifeways") traveling exhibit, a partnership among CIRI, the Alaska Native Heritage Center (ANHC), and Cook Inlet villages and Tribes that debuted April 20 at the Anchorage Information Meeting.

"CIRI worked in partnership with ANHC to build a custom traveling exhibit that showcases the rich history of the Cook Inlet region and celebrates the people and living cultures thriving here today," said Darla Graham (Yup'ik), director, CIRI stakeholder engagement. "We believe our Shareholders and Descendants—

regardless of geography—deserve access to their traditional language, culture, knowledge and community."

The Raven's Circle sat down with ANHC's Angie Demma, curator of collections and exhibits, and CIRI Descendant Melissa Shaginoff (Ahtna), assistant curator, to discuss the exhibit.

WHERE DID THE IDEA FOR THE NAKENAGHCH' SUTDU'A TRAVELING EXHIBIT COME FROM?

Angie: CIRI floated the idea to ANHC leadership about a year ago. Our first steps involved talking with the eight Cook Inlet Tribes and seven villages to envision what we collectively wanted to share. The cultural belongings and most of the information will reflect the Dena'ina, Ahtna, and Sugpiaq (Alutiiq) people and the geography of the Upper Cook Inlet, but CIRI Shareholders and Descendants are unique in their backgrounds. We wanted the exhibit to reflect that diversity.

WHAT DOES THE EXHIBIT CONSIST OF?

Angie: Many of the cultural objects come from ANHC's collections, and we've drawn from the Anchorage Museum's collections as well. The VR experience was an idea that (ANHC President and CEO) Emily Edenshaw came up with. Beyond that, we have posters and signs, archival photographs, a timeline, videos and more. We want to give folks different ways of engaging with the exhibit.

CONTINUED ON PAGE 8

CIRI PARTICIPATION COMMITTEE

The deadline for CIRI Shareholders and Descendants to apply to serve on the CPC is Sunday, June 30.

PAGE 3



CIRI ART CONTEST

CIRI Shareholders and Descendants are invited to submit original artwork interpreting the theme "Woven Scenes" by the June 14 deadline.

PAGE 6



2024 SHAREHOLDER DISTRIBUTIONS

The audit of CIRI's 2023 financial statements has been completed, allowing 2024 distribution amounts to be calculated.

PAGE 11



THE CIRI FOUNDATION

THE CIRI FOUNDATION LAUNCHES IMPROVED ONLINE APPLICATION SYSTEM

The CIRI Foundation (TCF) is passionate about empowering CIRI's original Shareholders and their direct Descendants through education and training. TCF recently upgraded its online platform to make applying for scholarships and grants easier than ever. Whether you're just starting out or returning for additional support, creating an account is the first step toward accessing these valuable resources.

IMPROVEMENTS AND ENHANCEMENTS INCLUDE:

- **An extended application window:** The 2024 general scholarship application period now runs May 1 through June 30.

CONTINUED ON PAGE 8



A MESSAGE FROM CIRI CEO SWAMI IYER

CREATING VALUE FOR OUR COMPANY AND STAKEHOLDERS

I was happy to meet many of you at my first Shareholder meetings since becoming your CEO! We had excellent turnouts at our spring Information Meetings, held April 20 in Anchorage and May 4 in Puyallup, Washington. Regularly sharing information about our company—how CIRI continually strives to be well-diversified and financially strong—is an important part of our business strategy. Clear and open communication results in stronger relationships, increased business opportunities, and it inspires confidence in our Shareholders and Descendants.

Being your CEO is an enormous privilege, and one I do not take for granted. My work is focused on developing and implementing a strategy that drives increased operational

performance and growth to create greater value for our Shareholders and their families.

To that end, in March, the CIRI Board of Directors and executive leadership team participated in a strategy session to set targets and develop a roadmap that will deliver sustainable growth in Shareholder value.

Our strategic approach includes:

- Growing and diversifying our revenue base through both organic and inorganic growth.
- Refining existing operations and optimizing resources already in place.
- Gaining access to new markets through mergers and acquisitions.

Any goal we set must be tempered by clarity and collective buy-in. We do this by staying true to our mission, vision and values;

tracking progress and measuring success along the way, which keeps us accountable; and maintaining Shareholder and Descendant focus in all we do.

Thank you for placing your trust and confidence in CIRI's leadership team—I look forward to continuing our journey! As always, if you have business-related questions, please email me directly at AskCIRICEO@ciri.com

Best regards,

Swami Iyer
CIRI CEO



A WORD FROM CIRI PRESIDENT SARAH LUKIN

CULTURE, COMMUNITY AND CONNECTION

Cama'i (hello)!

After Anchorage's second-snowiest winter on record, spring finally arrived! As our Alaska Native ancestors have done for millennia, we embrace the season by preparing for summer subsistence activities—readying our salmon nets, planting our gardens and watching for the first signs of spring greens.

In my village of Port Lions on Kodiak Island, salmon fishing is a principal part of our way of life. Smoking salmon is a process of patience and collaboration. It takes many hands to set and bring in the net; split, rinse and salt the fish; and hang the fillets in the smoke house. The smoke house must be watched day and night for up to seven days to ensure the fire doesn't go out and bears don't steal the fish. The process of putting up fish emphasizes the interdependency

of community, land and resources; all are integral to ensuring our physical, cultural and spiritual well-being. The sharing and eating of our subsistence foods is one of the ways we connect with each other and pass along our rich cultural traditions.

Our spring Information Meetings and Annual Meeting likewise invite us to come together and connect over a shared meal. I enjoyed seeing many of you at our Information Meetings, and I am looking forward to our Annual Meeting in June! The 2024 Annual Meeting coincides with the annual opening of the Kenaitze and Salamatof Educational Fishery—a program that provides families the resources to fish for salmon in what's currently a non-subsistence-use area. We commend the fishery on 35 years of providing for our Elders and families and educating future generations about this important traditional resource!

With summer nearly here, CIRI is preparing to welcome our summer interns. We are excited for the skills, talents and perspectives they will bring to the table.

I would also like to congratulate our many high school and college graduates! Siluwamken (I am proud of you)! If you plan to pursue higher education or vocational training, please visit The CIRI Foundation (TCF) website to see if you are eligible for grant or scholarship opportunities. You can read about TCF's improved online application system on page 1.

Quyanaa (thank you),

Sarah Lukin
CIRI President



BOARD CORNER

GET TO KNOW YOUR CIRI BOARD OF DIRECTORS: DIRECTOR JOHN ESTABROOK JR.

My name is John Estabrook Jr., and it is my pleasure to serve my fellow Shareholders and Descendants on the CIRI Board of Directors.

I was born and raised and currently reside in Anchorage with my wife and three daughters. I was gifted CIRI shares from my father, who inherited shares from his mother and my grandmother, Clara Gundrum Estabrook. Serving on the CIRI Board of Directors has been a goal of mine for many years, and I'm so grateful to my father for gifting me the shares that allowed me to pursue my dream.

My introduction to CIRI began when I decided to attend college. Scholarships through The CIRI Foundation allowed me to attend a top-notch engineering program without accumulating a pile of student-loan debt. While earning my degree, I worked at CIRI as a summer intern in the Land and Resources department. I learned a lot about our lands and the corporation and how to navigate real-world situations. I believe it is important that CIRI continue to offer its Shareholders and Descendants these types of opportunities.

After beginning my career at Alyeska Pipeline Service Company, I went on to earn a Master of Business Administration degree from the University of Alaska Anchorage. I currently manage my family's real-estate portfolio, which includes office, retail and warehouse space. I have served on the Cook Inlet Tribal Council board of directors since 2011 and as chair of the Clare Swan Early Learning Center since 2020. In addition, over the years, I have volunteered with the Native Youth Olympic Games and the CIRI Golf Classic and served as a delegate to the Alaska Federation of Natives.

Like many CIRI Shareholders and Descendants, I grew up in an urban environment. Engaging in subsistence activities like hunting and fishing allows me to stay connected with my culture. My family has a cabin on the Kenai Peninsula, and we especially enjoy dip-netting red salmon during the summer. I mostly captain the boat and clean the fish, but I enjoy watching the chaos

CONTINUED ON PAGE 5

CIRI PARTICIPATION COMMITTEE

APPLICATION DEADLINE: JUNE 30, 2024

CIRI Shareholders and Descendants (ages 18+) are invited to serve on the CIRI Participation Committee (CPC)! The CPC provides an opportunity to:

- Enhance your knowledge of CIRI's governance, business operations and investments, and Shareholder + Descendant programs.
- Connect directly with CIRI leadership and the Board of Directors.
- Lend your voice to the decision-making process.
- Build a network with your fellow CPC members.
- Help shape the future of our company!

Beginning in 2024, CPC members will serve non-staggered, two-year terms. In-person meetings will be held in the spring and fall. Travel expenses for out-of-area members will be covered by CIRI. All members will be compensated \$150 for each regularly scheduled meeting.

Apply by the Sunday, June 30 deadline by scanning the QR code or visiting the CIRI website.



IN TOUCH



BIRTH OF GRANDCHILD

CIRI Shareholder Bruce M. Anthony II is pleased to announce the birth of his grandson, Anikin Frank Anthony. Little Anikin was born Jan. 2 in Sankt Wendel, Germany, to Catrin Heinrich and Keanu Wolf Anthony.



JUNIOR NYO WINNER

CIRI Shareholder Donna Phillips is pleased to share that her grandson, Taotasi Filoi of Spring Hill Elementary in Anchorage, received first place in the arm-pull competition at 2024 Junior Native Youth Olympics. Taotasi is the son of Rachel and Joe, the grandson of the late Henry Bartels Sr. and the great-grandson of Clara Chuitt.



SHAREHOLDER SPOTLIGHT

CIRI Shareholder Rachael Fisher, right, with her mother, original CIRI enrollee Cecile Wesley. Photo courtesy of Ms. Fisher.

Some people happen into their jobs, but CIRI Shareholder Rachael Fisher (Tsimshian) knew she wanted to work for The CIRI Foundation. Looking for a fresh start and wanting to move back to Alaska after the untimely death of her husband, Rachael “really pursued TCF,” she recalled. “I kept checking the TCF website, and when the new (communications manager) position came open, I was like, yep, that’s for me.”

Rachael is connected to CIRI through her mother, original enrollee Cecile Wesley, and her maternal grandmother, Ellen Tait Wesley. Rachael’s father has German and Swedish ancestry. Rachael’s mother’s family hails from Metlakatla Indian Community in Southeast Alaska—the only federal Indian reserve in Alaska and not a part of the Alaska Native Claims Settlement Act (ANCSA). “My grandparents had moved to Anchorage by the time ANCSA passed, which is how my grandma and mom came to enroll with CIRI,” Rachael explained.

Rachael’s grandfather, Walter Wesley, is Tsimshian from Canada, so he did not enroll with any ANCSA corporation. However,

he helped write the S.35, S.835 and S.1571 bills to provide for the settlement of certain land claims of Alaska Native people.

Rachael’s father Rachael’s father, Guy Fisher III, was a school teacher, principal and district superintendent before retiring, “and he always emphasized how vital education is, and how being an Alaska Native person can open up certain opportunities,” she recalled.

Rachael earned a journalism degree from the University of Alaska Anchorage, describing her postsecondary educational journey as “very non-linear.” “I graduated from high school in 1993, but I didn’t start college until 1997,” she explained. “I had always gravitated toward English and history and thought I might want to be a teacher. But then I took a step back and thought, is this really what I want to do?” She paused her studies and worked several jobs—including for the Alaska Native Tribal Health Consortium, Alaska Native Coalition on Employment and Training, and Providence Alaska Medical Center—before enrolling as a journalism major. TCF scholarships “helped a lot and allowed me to

not have to work as much during the school year,” she said.

Shortly after receiving her bachelor’s degree in 2009, Rachael landed a job as senior editor for an Anchorage-based publishing company. She had been working only a few months when the company announced a merger, and she was offered a managing-editor position and an accompanying job transfer to San Diego. “Having just graduated college, I thought it would be good for my career. And, you know, hard to say no to palm trees and sunshine.”

Rachael lived in San Diego for 12 years. During that time, she met her husband, Ian Harmer. They were together for 10 years and married for three before he passed away in September 2021 from complications of West Nile virus, a mosquito-borne illness he contracted in 2018.

“My husband was a young, healthy person, only 43 years old,” Rachael said. “He went from being incredibly active—working

 **CONTINUED ON PAGE 6**



RACHAEL FISHER





BOARD CORNER, CONTINUED FROM PAGE 3

and excitement as our girls scoop the salmon out of the water! My hobbies also include reading—biographies, autobiographies and Alaska history, particularly the “Aunt Phil’s Trunk” series, are favorites—and watching my daughters play sports.

My vision for CIRI is a large, successful corporation, known not only in Alaska but nationwide, that provides meaningful distributions and cultural and social opportunities for our family of Shareholders and Descendants. I was elected to the CIRI Board in June 2023, and I am eager to continue my Board service in 2024 and beyond. Thank you for the trust you place in your Board of Directors! 🦅

BE THE MATCH

ALASKA NATIVE PEOPLE ARE ENCOURAGED TO REGISTER AS A BLOOD OR MARROW DONOR

A bone marrow transplant is a life-saving procedure for people with blood illnesses or cancers, such as leukemia or lymphoma—but it’s harder for Alaska Native people to find matches because they are underrepresented in the donor database.

Every three to four minutes, someone in the U.S. is diagnosed with a blood cancer. NMDP, formerly known as the National Marrow Donor Program, connects patients with a matching donor for a life-saving blood stem cell or bone marrow donation.

Less than 1% of Alaska Native and American Indian people are represented in the largest and most diverse stem cell registry in the world. Patients in need of transplants are more likely to find a donor from someone of their race.

Doctors look for a donor who matches their patient’s tissue type, specifically their human leukocyte antigen (HLA) tissue type. If you have an uncommon HLA tissue type, you might be the only one out of more than 41 million potential donors in the world who can save a person’s life. Every person who joins the registry gives patients more hope of finding the match they need.

Joining the blood stem cell donor registry requires only a simple cheek swab. As research has shown that cells from younger donors lead to better long-term survival for patients, you must be between the ages of 18 and 40 and meet NMDP’s medical guidelines to join the registry. For more information, visit bethematch.org. 🦅

STAY IN TOUCH AND LEARN MORE

The Shareholder + Descendant Programs department continually seeks opportunities to be responsive, relevant and engaging in our programs and offerings. We welcome your input! shareholderprograms@ciri.com

CONNECT WITH CULTURE, EXPERIENCES AND OPPORTUNITIES



AS SEEN IN OUR REGION

Located 100 miles northeast of Anchorage, the 27-mile-long, 4-mile-wide Matanuska Glacier is the largest glacier in Alaska that can be reached by vehicle. *Photo by Kevin Bennett.*



TRADITIONAL RECIPE

TYOTKAS FRY BREAD FOR A CROWD

Fry bread is a beloved culinary tradition among Alaska Native people. Thank you to the Kenaitze Indian Tribe's Tyotkas Elders Center for sharing their recipe with us!

INGREDIENTS:

- 5 pounds (approximately 18 cups) all-purpose flour
- 1/2 cup + 3 tablespoons sugar
- 1/2 cup powdered milk
- 3 tablespoons yeast
- 3 tablespoons salt
- 7 cups warm water
- Lard, shortening or vegetable oil (for frying)
- Tools: Mixer with dough hook

DIRECTIONS:

- In a mixing bowl, combine warm water, yeast and 3 tablespoons sugar. Let sit 5 minutes to bloom. Add the remaining ingredients, including 3/4 cup sugar.
- Mix for 10 minutes using a dough hook.
- Turn your oven to the lowest setting for about 1 minute, then turn it off. This will create a slightly warm environment for proofing.
- Place a small bowl of hot water on the bottom rack of the oven to create humidity.
- Cover the bowl containing your dough with a clean kitchen towel and place on the middle rack. Close the oven door and let the dough rise for approximately 1 hour or until doubled in size.
- Heat lard, shortening or oil to 365 degrees.
- Take about 3 tablespoons' worth of dough and form into a ball. Stretch the dough into thin, flat rounds. Make two 1-inch slits into the center of the round. Fry until lightly browned, turning once.
- Drain on paper towels.
- If you like, top with butter, cinnamon and sugar, or with jam made from local berries.

2024 CIRI ART CONTEST

THEME: "WOVEN SCENES"

Contest Deadline: Friday, June 14

CIRI's 2024 Art Contest is open to CIRI Shareholders and confirmed Descendants ages kindergarten through adult! Artists are invited to share, through original works of art, their interpretations of "Woven Scenes." Artwork may depict the diversity of our Shareholders and Descendants—where they grew up, where they are now and their connections with their heritage.

Winning entrants will receive the following prizes:

- * Youth in grades K-5: up to \$100
- * Youth in grades 6-8: up to \$250
- * Youth in grades 9-12: up to \$300
- * Adults (ages 18+): up to \$500

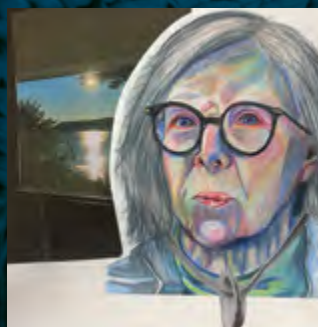
Original artwork or a high-resolution photo of the artwork may be submitted. The contest deadline is Friday, June 14. For more information, visit

ciri.com/art-contest

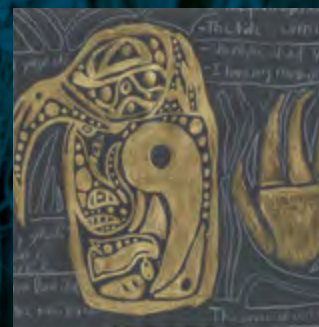
2023 CIRI ART CONTEST FIRST-PLACE WINNERS



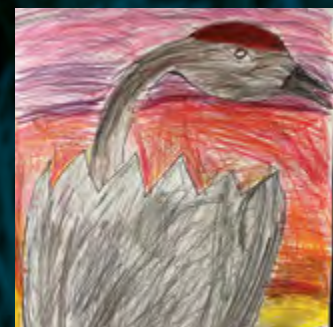
Jessie Rice (Yup'ik)
First Place / Adults 18+



Alexandra Cloutier (Aleut)
First Place / Grades 9-12



Mason Miller (Dena'ina Athabascan)
First Place / Grades 6-8



Sibylle Sethi (Alutiq)
First Place / Grades K-5



SHAREHOLDER SPOTLIGHT: RACHAEL FISHER, CONTINUED FROM PAGE 4

construction, surfing, biking—to not being able to stand or even get out of bed on his own. It took the doctors a week to diagnose him because the virus wasn't on anyone's radar, especially since we had not been traveling."

Nine months after her husband's passing, Rachael packed up her three cats and drove from San Diego, traveling the Alcan highway through Canada on her way to Alaska.

Somewhere between Tok and Glennallen, her car died. "I think of it as kind of a typical Alaska adventure people might have driving the Alcan," Rachael recalled. "But I think it was probably one of my favorite things about that trip, because even though it was stressful at the time, I look back on the experience, and so many people tried to help. It was hot, and people stopped to give me cold water and warn me about bears nearby. Almost every car that drove by was an Alaskan saying, 'What can I do?' It instantly felt like this is home; this is where I'm supposed to be. And the opportunity with TCF truly matched up with what I was hoping to do, which is to give back after having been a scholarship recipient myself."

The CIRI Foundation is committed to changing the lives of its Alaska Native beneficiaries through academic and career technical education scholarships, and through funding heritage and other education

projects, such as the Native Youth Olympic Games. Since its establishment in 1982 by the CIRI Board of Directors, TCF has contributed more than \$42 million to the educational and cultural pursuits of CIRI Shareholders and the Descendants of original CIRI enrollees.

As TCF's communications manager, Rachael's duties run the gamut, from publications and brand management to alumni relations and social media. Since joining the TCF team in October 2022, "it's been crazy—busy and a lot of fun," she said. "TCF does so many cool things, and a lot of it is because we want to make things work (for our beneficiaries). We look at the whole person. It's not just, 'Here's the paper, you didn't check the box, so you don't qualify.' That's not what we're about. We'll call and ask, 'Is there a reason you didn't check this box? Let's talk about it because we want to help you.'"

As for the future, Rachael is interested in learning more about Alaska Native art and jewelry ("my mom retired from the Alaska Native Medical Center and amassed a collection that she generously shares with me now"), spending time with her Alaska family and continuing to do meaningful work with TCF. "When my mom gifted me some of her shares, it built a stronger connection with the CIRI community," she said. "I wouldn't be where I am now, working for TCF, if I didn't have that connection. The more connected you are, the more you want to get involved."



CIRI IN THE COMMUNITY

CULTURE CAMPS AND EVENTS

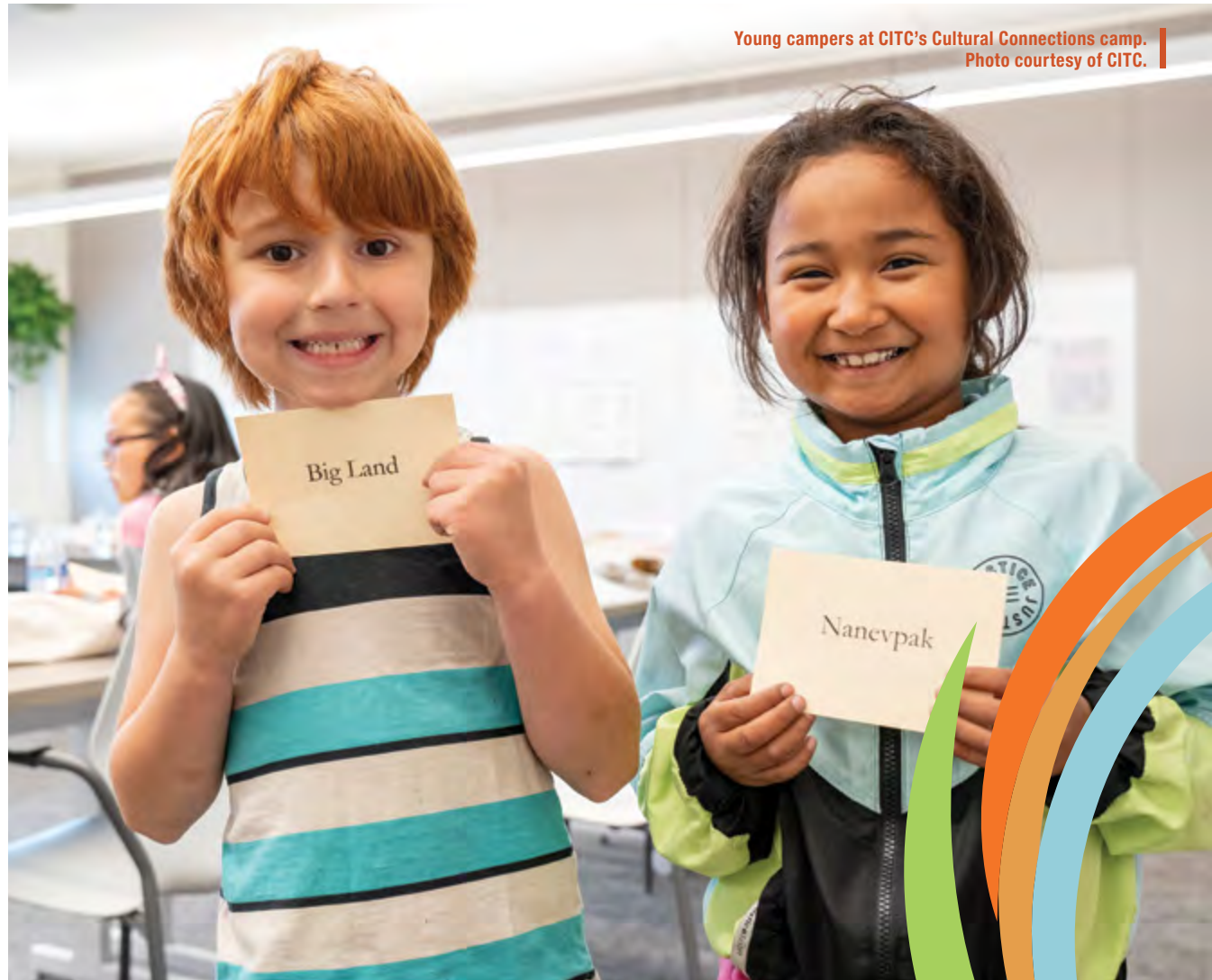
This summer, Cook Inlet region villages, Tribes, designated Tribal organizations, and community nonprofits will host a number of camps and cultural events.

At the Tikahtnu Forum meeting in April, Cook Inlet region leaders and representatives compiled a comprehensive list of offerings, with the goal of engaging CIRI Shareholders, Descendants and other stakeholders.

“These camps and gatherings advance our regional priority of revitalizing Alaska Native culture and identity,” said CIRI President Sarah Lukin. “By celebrating our diverse Alaska Native cultures and building awareness of cultural identity, we come into closer alignment on our shared goals and values and strengthen our communities.”



For a current list of offerings, visit ciri.com or scan the QR code:



Young campers at CITC's Cultural Connections camp. Photo courtesy of CITC.



UNIVERSITY OF ALASKA FAIRBANKS eCAMPUS

TAKE ADVANTAGE OF IN-STATE TUITION AND A 10% TUITION DISCOUNT!

Elevate your education with the University of Alaska Fairbanks (UAF)! UAF is a Land-, Sea- and Space-Grant university and an international center for research, education and the arts, emphasizing the circumpolar North and its diverse peoples. It is a public, fully accredited university with approximately 7,450 students enrolled.

The UAF eCampus program offers 50+ online programs, from endorsements to graduate degrees. CIRI Shareholders and confirmed Descendants enjoy a 10% discount on online degrees and receive in-state tuition—no matter your state of residency.

The deadline for undergraduate students to apply for the 2024 fall semester without a late application fee is June 15. For more information, visit ecampus.uaf.edu or email UAF Corporate Enrollment Liaison Teresa Thompson at tathompson2@alaska.edu.



CIRI AND ANHC LAUNCH TRAVELING CULTURAL EXHIBIT, CONTINUED FROM PAGE 1

Melissa: A lot of the exhibit items focus on subsistence hunting and gathering. We thought, what would be a unique thing for a VR experience? And we thought of beluga hunting, because here in Degheyyey kaq' (Anchorage), it's a very special thing. Due to declining beluga populations, Cook Inlet subsistence hunting ended in 1999. We wanted to bring it to life because it's not that long ago that people stopped doing it.

IS THE EXHIBIT SOMETHING YOU PLAN TO ADD TO OVER THE YEARS, OR IS IT MORE LIKE A SET COLLECTION?

Angie: CIRI commissioned this traveling exhibit to share with CIRI villages, Tribes, local schools, and Shareholders and Descendants. When we're in those places, what is it that people want to see that they don't have access to? We might want to switch things up, depending on where we are.

SINCE THIS IS A TRAVELING EXHIBIT, HOW DIFFICULT IS IT TO TRANSPORT IT FROM PLACE TO PLACE?

Melissa: The exhibition is not something we can just pack into suitcases; we have a responsibility to take care of these cultural belongings. We're still learning and figuring it all out. The idea of taking the museum outside of the museum is important, right? To show how much these things are still alive to us and not that distant from our own lives. The process of making that happen is making the museum stretch itself, but it's a good thing—sharing culture and meeting people where they're at.

WHAT ARE YOU HOPING VIEWERS TAKE AWAY FROM THE EXPERIENCE?

Melissa: As curators, we're always thinking about how the audience perceives the information we're putting out there. But with CIRI, there's such diversity—those who are from the villages, and those who live in other places, especially outside our region and the state. Nearly half of CIRI Shareholders live outside Alaska, and many have never been here. It's a delicate balance of how to share culture in a way that is accessible to all. ANHC's multifaceted approach helps—providing different ways of interacting with the exhibit. Our goal always is to be coming from an Indigenous-centered perspective. I think we've achieved that. 🦅



TOP: The Nakenaghch' Sutdu'a exhibit includes these Dene knives and beaded knife sheath, on loan from the Anchorage Museum.
BOTTOM: ANHC President and CEO Emily Edenshaw chats with Gabe Layman, president and CEO of Cook Inlet Housing Authority, at the Anchorage Information Meeting, held April 20.

IMPORTANT DATES

- June 3, 2024** Direct deposit deadlines: CST Elders Distribution and second quarter Shareholders' distribution
- June 7, 2024** CST Elders Distribution change of address deadline
- June 13, 2024** Second quarter Shareholders' distribution change of address deadline
- June 14, 2024** CST Elders Distribution
- June 19, 2024** Juneteenth (CIRI offices closed)
- June 21, 2024** Second quarter Shareholders' distribution
- June 30, 2024** CIRI Participation Committee application deadline; youth educational incentives entry deadline; quarterly participation prize drawing deadline
- July 1-5, 2024** CIRI summer sabbatical (CIRI offices closed)



THE CIRI FOUNDATION LAUNCHES IMPROVED ONLINE APPLICATION SYSTEM, CONTINUED FROM PAGE 1

- **Simplified application requirements:** TCF no longer requires letters of recommendation or detailed financial plans. The GPA requirement is now 2.0 per term.
- **Improved career-training support:** New rolling deadlines for TCF's Career Technical Education Scholarships offer flexible support for those pursuing vocational and technical training.
- **Support for summer school:** Recognizing the value of uninterrupted education, TCF has introduced funding options for summer courses.

SIMPLIFYING ELIGIBILITY VERIFICATION

Obtaining a registered Descendant card from CIRI is crucial in simplifying eligibility for TCF scholarships and grants. We recommend acquiring this card well in advance to streamline your application process. For information, visit the CIRI website or contact Shareholder Relations.

TCF IS PROUD TO SHARE ALUMNI ACCOMPLISHMENTS

TCF invites scholarship recipients to share journeys and milestones at thecirifoundation.org/share-your-story. Your narratives inspire resilience and ambition within the CIRI community!

KEEPING YOU INFORMED

Keep up to date by signing up for text updates at thecirifoundation.org and follow TCF on Facebook and LinkedIn for daily updates on educational and career-development opportunities. 📌

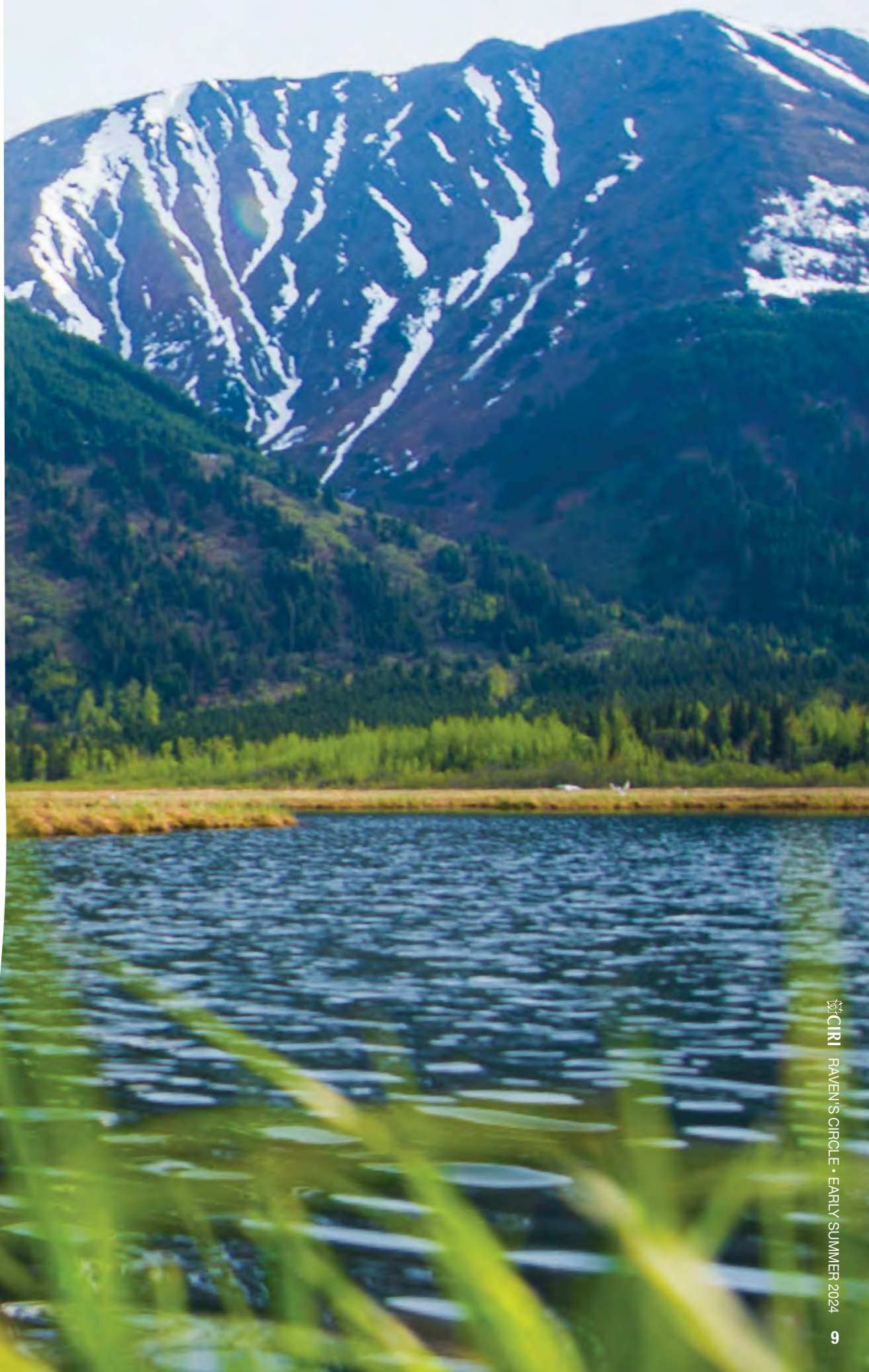
CIRI OFFICE CLOSURE:

CIRI offices will be closed Monday, July 1 through Friday, July 5. During the closure, the Qenek portal (qenek.ciri.com) will remain available 24/7. Wishing our Shareholders, Descendants and their families a fun and safe Independence Day!

CONDOLENCES

NANCY AHLRICH, 94
 JANICE LYNN ANDERSON, 81
 KEITH BRIAN BACON, 37
 VIRGINIA HELEN BAXTER, 89
 TEKLA HAZEL-DAGMAR BECKER, 91
 JOHN LYLE BURDETTE SR, 87
 EUGENE AL CAMERON JR, 65
 DANIEL LEROY CLEVELAND, 60
 JUDY ANN DARIEN, 82
 KIM W. ERBEY, 63
 SARAH S. GREGG, 79
 FORREST RAY JAMES, 82
 WALTER ERIC JOHNS JR, 83
 SELINA D. JOSHUA, 85
 COURTNEY DEANN SOPHIE KAYOUKTUK, 28
 CHRISTINA JANE MAMALOFF, 75

KELLY MITCHELL MCDANIEL, 39
 SHERLYN MICHELLE MULLINS, 55
 LOIS MUNSON, 92
 DEBORAH FLORENCE PARR, 74
 DAVID PASH, 61
 ROBERT ARTHUR SAMBO, 81
 TERRY NICKALOIE STEPHAN, 52
 WILLIAM ERIC STEWART JR, 52
 LORETTA JUNE THROOP, 80
 CLARENCE AUGUSTUS TRAEGER, 80
 AMANDA DANIELLE VARNEY, 41
 MELFORD E. WESLEY SR, 73
 CATHY RAE WHITE, 64
 MICHAEL EDWARD WHITE, 61





WELCOME TO--

DIMI MACHERAS



CASEY SILVER

chickaloonies

LEGENDS
LANGUAGE
MAGIC

JOIN THE ADVENTURES OF TWO BEST FRIENDS AND THEIR GRANDMA IN A MAGICAL WORLD WITHOUT A SUN!



LOVABLE LOUDMOUTH, ASPIRING STORYTELLER AND BEST FRIEND OF SASQUATCH E. MOJI.



SPEAKS ONLY IN EMOJIS, ASPIRING STORYTELLER AND BEST FRIEND OF MISTER YELLY.



CHICKALOON VILLAGE ELDER, STORYTELLER AND KNOWLEDGE KEEPER.



IT WAS BIGGER THAN A FUZZY TAILED MOON MONKEY --AND TWICE AS FAST!

BUT WE STOPPED THAT FRENZIED FISH IN ITS TRACKS WITH OUR SUPERIOR SALMON RIDING SKILLS!!



UNFORTUNATELY, WE KINDA CRASHED INTO THE MARKET AT THE SAME TIME AND--



YEAH, BUT--

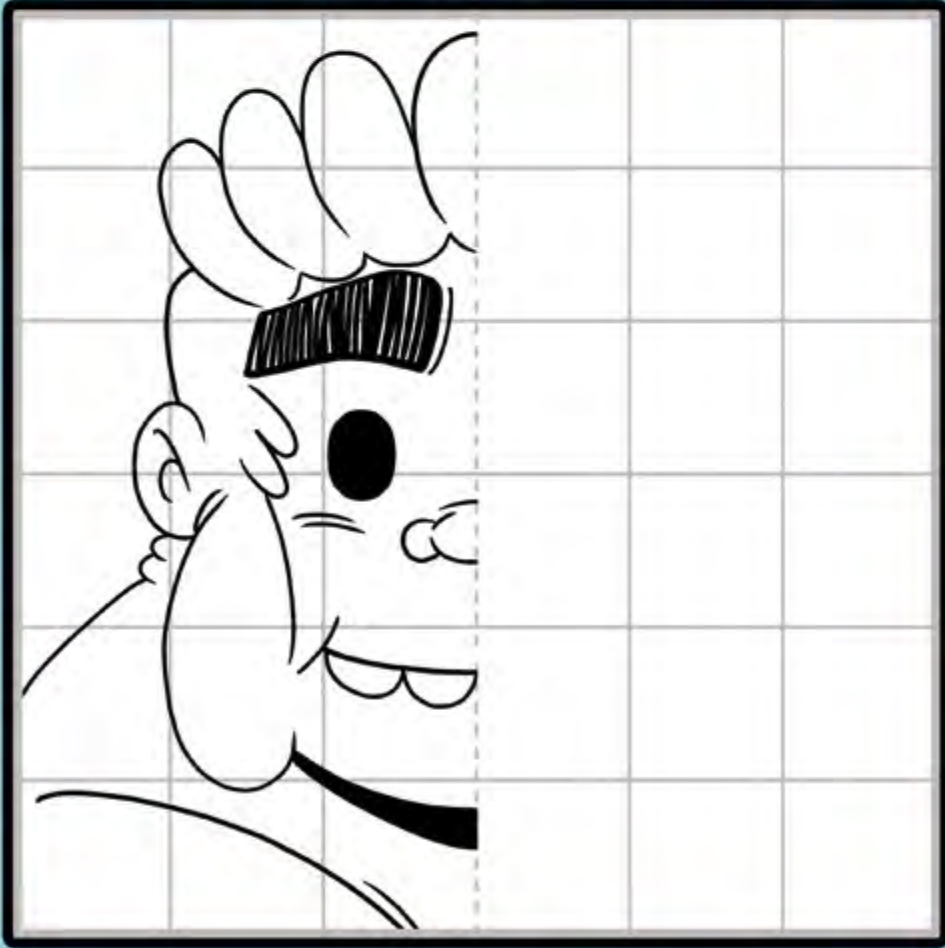


BUT WE ARE TELLIN' THE TRUTH, RIGHT, MOJI?



LESSON: IT'S NEVER OK TO LIE

INTERACTIVITIES



USE THE GRID TO DRAW MOJI!

PRACTICE YOUR EMOJI EMOTIONS!



EXCITED



TIRED



CONFUSED

VISIT EIGHTYPERCENTSTUDIOS.COM FOR ALL THINGS CHICKALOONIES!

FOLLOW US FOR THE LATEST CHAPTER OF THE 80% STORY

@80PERCENTSTUDIOS



2024 SHAREHOLDER DISTRIBUTIONS

SHAREHOLDER DISTRIBUTIONS

Shareholder distributions are set by the CIRI Board of Directors and distributed by the Distribution Fund of the CIRI Settlement Trust (CST). Distributions are for beneficiaries who are CIRI Shareholders. Currently, CIRI makes an annual contribution to the fund that is equal to 3.5% of the previous year's ending Shareholders' equity. Shareholders receive

four payments per year from this contribution. We are pleased to announce the audit of CIRI's 2023 financial statements has been completed, allowing 2024 distribution amounts to be calculated.

First quarter payments from the CST Distribution Fund, in the amount of \$9.85

per share (or \$985 per 100 shares), were mailed or directly deposited on Friday, March 29 to all CST beneficiaries who own CIRI stock. Distribution dates, amounts and other relevant deadlines for the remainder of 2024 are as follows:

Direct Deposit Sign-Up Deadline (3 p.m.)	Address Change and Cancel Direct Deposit Deadline (3 p.m.)	Record Date	Mailing Date	Payment Amount
June 3, 2024	June 13, 2024	June 14, 2024	June 21, 2024	\$9.85/share
Sept. 9, 2024	Sept. 20, 2024	Sept. 23, 2024	Sept. 30, 2024	\$9.85/share
Nov. 18, 2024	Nov. 25, 2024	Dec. 3, 2024	Dec. 10, 2024	\$10.73/share

ELDER DISTRIBUTIONS

Quarterly Elders Fund distributions of \$450 are paid to the beneficiaries of the CST who are original CIRI Shareholders and alive and 65 years of age or older on the approved dates of

record, providing they either own at least one share of CIRI stock or gifted all their CIRI stock prior to July 31, 2003. First quarter payments from the CST Elders Fund were mailed or

directly deposited on Friday, March 8 to eligible Elders. Distribution dates and other relevant deadlines for the remainder of 2024 are as follows:

Direct Deposit Sign-Up Deadline (3 p.m.)	Address Change and Cancel Direct Deposit Deadline (3 p.m.)	Record Date	Mailing Date	Payment Amount
June 3, 2024	June 7, 2024	June 13, 2024	June 14, 2024	\$450
Sept. 3, 2024	Sept. 6, 2024	Sept. 12, 2024	Sept. 13, 2024	\$450
Nov. 18, 2024	Dec. 5, 2024	Dec. 12, 2024	Dec. 13, 2024	\$450

RESOURCE REVENUE DISTRIBUTION

For Shareholders who owned at-large shares and had a valid mailing address on file, resource revenue payments of \$11,021.2 per share (or \$1,102.12 per 100 shares) were mailed or directly deposited on April 1, 2024. Resource revenue payments for Shareholders who own village-class shares are mailed directly to their village corporations, as required by the Alaska Native Claims Settlement Act (ANCSA). Information on the type of stock owned is available in the Qenek

portal. Resource revenue payments are made in accordance with Section 7(j) of ANCSA, which directs the sharing of resource revenues among the 12 regional corporations within the state of Alaska. Future resource revenue distribution amounts will fluctuate based on the business decisions and operations of the other Alaska Native regional corporations.

Whether you receive a check or participate in direct deposit, any time your address changes

you must either update your address in Qenek or send a signed address change request to the Shareholder Relations department. You must also keep your address updated with the U.S. Postal Service. If your CIRI mail is returned as undeliverable, distributions will be held, interest-free, and you do not qualify to participate in any prize drawings until your address is updated.



MISSING SHAREHOLDERS

The following CIRI Shareholders do not have a current mailing address on record. When CIRI mail is returned as undeliverable, the distributions are held, and the Shareholder does not qualify to participate in any prize drawings until the address is updated. Shareholders with Qenek accounts may update their addresses via the portal. Alternatively, Shareholders may visit CIRI's website or call Shareholder Relations at (907) 263-5191 or (800) 764-2474 for address change forms and information.

(As of 5/16/2024)

Matthew James Anaruk
Merrianna Marie Baehm
Sadie Lynn Baktuit
Wanda Jo Benson
Janet Audrey Black
Chase Lynn Brewer
Robert Garland Brown
Lorraine Mahogany Campbell
Nadia Linda Carreira
Richard Lee Chamberlain
Charlene Marie Charls
Teresa Lea Christiansen
Terry Lynn Clark
Billy Leslie Collins
Anita Jewell Davis
Angel Rafael-Rivera Dean
Lillian Sarah Demoski
Marcia K. Denison
Clifford Leon Dolchok Sr.
Kayla Dawn Eichholz
Jace Robert Elder
David Andrew Endresen
Taloa Ann Farve
Anthony Lane Fry
Robert Wayne Galvan
Ricole Maria Garcia-Olivera
Cheryl Denise Goozmer
Rose Marie Guilbeau
Dahmir Lamarr Hale
Nathan Tanner Hamilton
William Russell Hardacre
Jason David Harrington
Robert William Haynes
Shirley Ann Haynes
Bethany Michelle Hoke
Matthew Michael Holmes
Samantha Jordan
Michelle Holmes-Hooper
Justin James Holst-Martin
Jennifer Clara Howard
Shawn Kurtis Huffman
R. L. Hutchison
Bernard William Johnson Jr.
Edward Charles Ayak Johnson
Shane Alan Johnson
Walter Antone Johnson Jr.
Jacen Lee Kallner
Marie Bertha Kaloa
Roberta Marie Karabelnikoff
Bruce Arnold Katchatag
Travis Wade Kayouktuk
Lisa Lyn Keene
Carla Ann Kinder
Timothy Christian Kirschner-Griffith
Samantha Loraine Komakhuk
Richard Benjamin Koutchak Jr.
Lillian Alayna Kroto
William Jack Lamont III
Grant Harlan Larson
Shane Coty Ling
David Atlas Lock Jr.

Alexander Konstantinos Macheras
Sandra Lee Marcus
Dale Johnathon Martin
Kelly Ray McClusky
Virgil Dasius McCord Jr.
Jeffrey Brian Meeks
Darrell Dean Miller
Anthony William Moonin
Brenda June Mulford
Karina Eleanor Anne Munson
Jessica Christina Norris
Dg Nanouk Okpik
Michael Terrance Oneill II
Donald Norman Outwater II
Alec Emil Peterson
Timothy Lee Petterson
Matthew Walter Phillips
Raymond Coy Powers
Jacqueline Bernadette Prince
Alana Britney Ray-Fowler
Seth Ryan Reynolds
Michelle Lee Rickteroff
Patrick Ryan Robinson
Jody Renee Sarren
Joseph John Seetomona
Christian Michael Shaffer
Valorie Jean Shore-Jones
Steven Shuravloff
Justin Michael-Earl Singley
Robert Lee Smith
Samaad Ali Smith
William Dean Stammer
Shawn William Steik
Carl James Steve
Isabella Renee Stevens
Jupiter Rose Stevens
Marilyn Mae Stiles
Victor Lee Stover
Gage Robert Swanson
Levi R. Tetpon
Otto R. Thiele III
Ivory Julianna Trenton
Harold Jason Turner III
Hannah Irene Twitchell
Darya Lillis Vanwinkle
Teresa Yvette Walters
Darlene Ann Warren
Melford Nunoolik Nupeauk Wesley
Patrick James Westdahl
Peggy Lee-Sharen Whipple
Yolanda Marie White
Florence Marie Wildman
Jack D. Wilkening
James Robert Williams
Nicholas Carroll Wilson
Philip Hunter Wilson Jr.
Bobbie James Wolfskill
William Gerald Woodall II
Machelle Lynn Yankovic
Loretta Anne Zoltek

CIRI BOARD OF DIRECTORS

Douglas W. Fifer, Tlingit
Chair*

Thomas P. Huhndorf, Yup'ik
Chair Emeritus*

Samuel G. Spangler, Aleut
Vice Chair*

Cynthia L. Muller, Haida
Secretary*

Rolf A. Dagg, Yup'ik
Treasurer*

Robert E. Harris, Inupiaq
Assistant Secretary*

Michelle B. Lindersmith, Inupiaq
Assistant Treasurer*

Michael R. Boling, Athabaskan

Margaret L. Brown, Yup'ik

Gregory L. Craig, Inupiaq

John J. Estabrook Jr., Athabaskan

Carol A. Gore, Aleut

Jeffery A. Gonnason, Haida

Cheryl L. Mulcahey, Inupiaq

Louis "Lou" Nagy Jr., Yup'ik

* Denotes a member of the Board of Trustees of the CIRI Settlement Trust



P.O. Box 93330
Anchorage, Alaska 99509-3330

CIRI CONTACT INFORMATION

CIRI Headquarters

725 E. Fireweed Lane, Suite 800
Anchorage, Alaska 99503
Tel. (907) 274-8638
www.ciri.com

Shareholder Relations

Tel. (907) 263-5191 or (800) 764-2474
Fax (907) 263-5186
Email shareholderrecords@ciri.com

For estates/wills, contact Probate at:

Tel. (907) 263-5540 or (833) 263-5136
Fax (907) 263-5186

Submit ideas, stories & recipes to info@ciri.com



EARLY SUMMER 2024 // CIRI RAVEN'S CIRCLE NEWSLETTER

EDITOR: CARLY STUART // LAYOUT AND DESIGN: YUIT COMMUNICATIONS // © CIRI, 2024

PRESORTED
FIRST-CLASS MAIL
U.S. POSTAGE
PAID
PERMIT NO. 257
ANCHORAGE, AK

WINNERS' CIRCLE

To increase participation in certain programs, CIRI holds periodic prize drawings from the names of those enrolled who meet certain criteria and have a current mailing address with CIRI. If CIRI has returned mail, a different winner will be selected. Visit the CIRI website or call (907) 263-5191 or (800) 764-2474 to learn more. The following Shareholders and Descendants have been selected as winners for the most recent CIRI drawings:

DIRECT DEPOSIT DRAWING

Fourth quarter drawing for \$500:

- JAMES BLACK

The direct deposit instruction must be current with CIRI to win.

eNEWSLETTER DRAWING

Fourth quarter drawing for an iPad or \$400 cash:

- JANA EMERSON

Shareholders enrolled in the eNewsletter program with a valid email address on file.

CONFIRMED, REGISTERED DESCENDANT DRAWING

Fourth quarter drawing for a Kindle Fire HD or Amazon gift card:

- ETHAN PISCOYA (YOUTH)
- NATASHA EVAN (ADULT)

Direct lineal Descendants of CIRI Shareholders who are not themselves Shareholders, who have submitted legal documents substantiating descent and who have a valid email address on file.

QENEK ACCOUNT DRAWING

Fourth quarter drawing for a YETI cooler:

- PAULINE JEFFREY

Shareholders and confirmed Descendants who have created a Qenek account or accessed an existing account during the preceding quarter.

GREENLINK DRAWING

Fourth quarter drawing \$500:

- LUCY UNTIET

Shareholders who have a valid direct deposit instruction and email address on file and who have opted into electronic delivery of certain materials.

