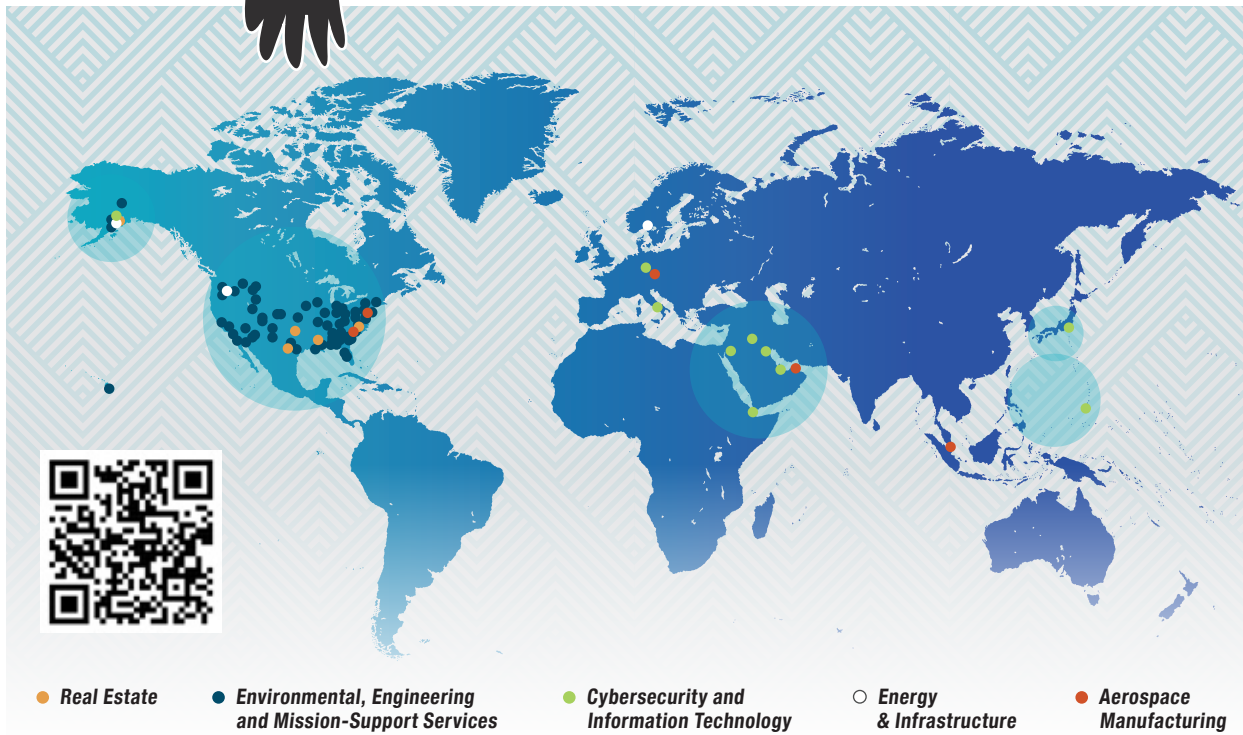




RAVEN'S CIRCLE

SHAREHOLDER AND DESCENDANT NEWSLETTER
SUMMER 2026



CIRI IN 2026

GLOBAL REACH, MEASURABLE IMPACT

Across Alaska, the Lower 48 and beyond, CIRI continues to strengthen our business portfolio. Our CORE map—representing Communities, Operations, Resources and Enterprise—offers a visual snapshot of CIRI’s global presence. Behind each point on the map are employees, partners, and projects delivering measurable results and building long-term value.

Since the beginning of the year, the CIRI family of companies has made steady progress across industries ranging from environmental remediation and aerospace manufacturing to cybersecurity and advanced technologies. These efforts reflect a clear focus: disciplined growth, operational excellence, and translating business performance into lasting benefits for Shareholders and Descendants.

One milestone worth special recognition comes from North Wind Group, whose teams recently marked a historic achievement at the Moab Uranium Mill Tailings Remedial Action (UMTRA) Project in Utah. On April 9, project partners gathered to celebrate the permanent removal of 16 million tons of residual radioactive material from the Moab site—an important step in safeguarding the Colorado River and surrounding environment near Arches National Park. The ceremony included a symbolic tile transfer representing the movement of the final ton of material to a secure disposal repository at Crescent Junction. Through its subsidiary North Wind Portage Inc., CIRI has proudly supported this cleanup effort since 2011, working alongside the U.S. Department of Energy, local communities and

stakeholders to address the legacy of historic uranium processing.

Following its acquisition by CIRI earlier this year, HABCO Industries has continued to demonstrate strong leadership and operational momentum. HABCO President and CEO Brian Montanari was recently named to Hartford Business Journal’s “2026 Power 50,” recognizing influential leaders shaping Connecticut’s business landscape. The past year brought major milestones for HABCO, including the consolidation of two Connecticut operations into a single campus and a successful ownership transition following its Jan. 29, 2026, acquisition by CIRI. Established in 1970, HABCO is a global aerospace manufacturer serving more than 250 customers in over 50 countries—an example of how CIRI’s enterprise investments extend our reach while supporting highly skilled workforces.

Innovation and agility were also on display at OSC Global, where the team successfully completed its first deployment of OPTICA—OSC Global’s cybersecurity scanning and compliance platform—for a federal customer operating in a highly secure environment. The installation demonstrated OSC Global’s ability to solve problems in real time, implement rapid on-site updates and prepare customers for independent operation.

Together, these achievements underscore a broader message: CIRI is paying close attention to the business front—investing thoughtfully, supporting strong leadership and executing with purpose. As our CORE map makes clear, the impact of that work is felt well beyond any single location, helping position CIRI for continued strength today and for generations to come. ✨

CIRCLE OF PROSPERITY

Supporting Shareholders and Descendants through all life stages, from birth to legacy, while staying grounded in Alaska Native values

PAGE 2



SHAREHOLDER SPOTLIGHT

Spotlight on CIRI Shareholder and Nulyah Program participant Sean Fisher

PAGE 4



VILLAGE VIBES WITH THE FUN UNCLE: CHICKALOON

Chickaloon Village Traditional Council works to preserve Ahtna culture, language and community knowledge

PAGE 7



BOARD ELECTION RESULTS

2026 Board Directors and officers

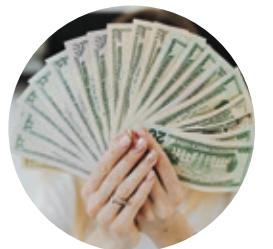
PAGE 10



2026 ANNUAL MEETING PRIZE WINNERS

eVote and Early Bird prize winners

PAGE 10



SHAREHOLDER + DESCENDANT PROGRAMS

Upcoming programs and opportunities for Shareholders and Descendants

PAGE 11



THIRD QUARTER DISTRIBUTIONS

Third quarter distribution dates and deadlines

PAGE 12



CIRCLE OF PROSPERITY

A LIFELONG COMMITMENT

At CIRI, prosperity is not defined by financial success alone. While economic strength is an essential foundation, true prosperity encompasses the full well-being of our people—across generations, across stages of life and across the many ways we remain connected to our cultures, our heritage and each other.

The Circle of Prosperity is a framework that illustrates how CIRI supports Shareholders and Descendants through all life stages, from birth to legacy, while staying grounded in Alaska Native values. Prosperity is understood as a continuous, interconnected journey that honors where we come from, supports where we are today and prepares us for what lies ahead.

A HOLISTIC VIEW OF WELL-BEING

The Circle of Prosperity brings together several elements that are inseparable in CIRI's vision

of success: generational empowerment, cultural vitality and community strength. Each reinforces the others. When educational opportunities expand, future leadership grows. When heritage and language are honored, identity and resilience are strengthened.

ROOTED IN CULTURE, FOCUSED ON THE FUTURE

CIRI's commitment to cultural preservation is central to the Circle of Prosperity. Shared knowledge, values, and traditions are living assets that guide decision-making and shape how success is defined. By honoring these foundations, CIRI ensures that growth remains aligned with community values.

At the same time, the Circle advances forward-looking vision. Economic development, workforce participation, business growth, and responsible investment are critical to creating opportunity today and stability tomorrow. By pairing long-term financial strength with cultural grounding, CIRI works to ensure prosperity that endures.

A CONTINUOUS CIRCLE — NOT A FINISH LINE

“The Circle of Prosperity isn't a checklist or a finish line, but an ongoing commitment,” CIRI Board Chair Doug Fifer emphasized. “It reflects our responsibility to support our Shareholders and Descendants at every stage of life, adapting as their needs change and new opportunities emerge. As our people contribute knowledge, leadership and vision back into the Circle, they help strengthen the paths for those who follow.”





A MESSAGE FROM CIRI CEO SWAMI IYER AND PRESIDENT TABETHA TOLOFF

DELIVERING RESULTS AND INVESTING IN THE FUTURE

Thank you to everyone who turned out for our Information Meetings, held April 25 on the Kenai Peninsula and May 2 in the Pacific Northwest, and our Annual Meeting of Shareholders, held June 6 in Anchorage. We enjoyed connecting with all of you, sharing our 2025 financial results, hearing your questions and clarifying our focus as we move through the year.

In 2025, financial performance was strong overall, supported by gains in priority areas. Execution across our portfolio delivered a 60% increase in consolidated net income, while disciplined growth added \$79 million in new revenue through the launch of our cybersecurity and IT segment. Within the CIRI family of companies, performance improvements continued, as well—most notably at North Wind Group, where recurring operations drove a 30% increase in net profit margin. These outcomes reflect years of deliberate investment, operational focus, and a willingness to actively manage our portfolio to build durable earnings and cash flow.

That strength translated directly into value for Shareholders. In 2026, annual distributions increased by 4.64% to \$48 per share, alongside an increase in quarterly Elder distributions to \$600.

Behind these results is a workforce of more than 3,000 employees across the CIRI family of

companies—people showing up every day to serve real-world missions, including those that support the warfighter and national priorities. “Serving the mission, living the mission” is not just a slogan; it’s how our teams operate, whether they’re advancing technology, delivering complex services, supporting communities, or restoring and protecting environments in service of critical public missions. Their work is ultimately in service of our Shareholders and Descendants, and we are deeply grateful for their commitment.

This year, we’re also introducing our CORE map, a framework that brings our Communities, Operations, Resources and Enterprise into a single view. CORE reflects how strong operations support enterprise growth, how resources are stewarded intentionally and how communities remain central to every decision we make.

That same clarity is shaping our investments in our Shareholders and Descendants. This spring, we launched the first cohort of the Nulyah (Dena’ina: “it is growing”) Program, an executive-led learning and mentoring experience designed for mid-level career professionals. Through direct engagement with senior leaders, the program is strengthening leadership capacity, expanding professional networks and creating clearer pathways for advancement. Early engagement

has been strong, with participants building meaningful connections and gaining valuable insight into leadership at CIRI and beyond.

We also continue to celebrate creativity and connection across generations. Our annual Art Contest has wrapped up, and we look forward to launching our Photo Contest later this summer—another opportunity for Shareholders and Descendants across a range of ages to share their perspectives and talents!

The year ahead remains focused on execution, opportunity and stewardship. We will continue to optimize what we own, grow where it makes sense and invest with a long view, always mindful that today’s decisions shape tomorrow’s possibilities.

With respect and gratitude,

Swami Iyer
CIRI CEO

Tabetha Toloff
CIRI President



BOARD SNAPSHOT: MARGIE BROWN

Each edition of our newsletter will offer a brief, personal look at our Board members through authentic photos and short captions that highlight the people behind the leadership roles. Here is Director Margie Brown with her husband Allen at the Norwegian/Russian border, outside Kirkenes, Norway.

“We traveled last summer to the far north of Norway, to the area known as Finnmark, to visit my Saami and Norwegian cousins. We happily stayed on the Norwegian side of the border. We were approached by a Finnish reporter from Helsinki who inquired why we were at the border. It gave us a chance to describe Alaska’s unique relationship with Russia, from Vitus Bering to the present-day Russian jets flying just outside Alaska’s airspace.”



SHAREHOLDER SPOTLIGHT



CIRI Shareholder Sean Fisher stands outside the Alaska Native Medical Center in Anchorage. Photo courtesy of Mr. Fisher.

With a career in health care that spans more than two decades, Sean Fisher (Tsimshian) has built his professional life step by step—working his way from the ground up into a director-level role through steady leadership, learning and a commitment to service.

While Sean’s early life didn’t include a strong connection to his Tsimshian roots, he is now actively embracing his Alaska Native heritage as a CIRI Shareholder and passing those values along to his four children. His blend of life experience, professional growth and cultural discovery recently earned him a place in CIRI’s selective Nutyah Program, which supports mid-career professionals in strengthening their leadership skills and long-term impact.

The Raven’s Circle recently sat down with Sean to talk about his journey, his motivation and what continues to drive him forward.

WHAT IS YOUR FAMILY HERITAGE, WHERE DID YOU GROW UP AND WHAT IS YOUR CONNECTION TO CIRI?

My mother, Cecile Wesley, is an original CIRI enrollee. She is Tsimshian, with family roots in Metlakatla. [Note: Metlakatla Indian Community in Southeast Alaska is the only federal Indian reserve in Alaska and not part of the Alaska Native Claims Settlement Act.]

I grew up in Eagle River and spent several of my childhood years in Utqiagvik. The running joke was that I was the only Tsimshian on the North Slope. Then for middle and high school, my family lived in rural Tennessee. I was there for my first attempt at college and then came back to Anchorage when I was 18 or 19.

I was in my 20s when I was gifted CIRI shares from my mother. Growing up, I had an awareness of CIRI; my mother would talk about it, but it wasn’t at the forefront of our day-to-day lives. Now that I’m in my 40s, I’m at the stage of my life we’re I’m looking at CIRI as “this is my Corporation,” and wanting to connect more deeply.

YOU’VE BEEN WORKING IN THE HEALTH CARE FIELD FOR ALMOST 25 YEARS. HOW DID YOU GET STARTED?

My first job in health care was at age 18 as a lift team technician. It was an entry-level position—patient lifts and transfers, lifting equipment, providing basic patient care.

I really loved working with the patients and with the doctors and nurses, seeing the dynamics of health care.

I was on a contract with multiple Anchorage-area hospitals, and I enjoyed the variety. You’re helping people, many of whom are sick or struggling, and it’s gratifying. You also work with medical providers and staff who are highly skilled and educated. They would challenge me: “What are you going to do after this job?” It forced me to think about my future.

WHAT EXPERIENCES GRADUALLY LED YOU INTO EMERGENCY MEDICAL SERVICES AND HEALTH CARE LEADERSHIP?

I think it was an accumulation of joining the lift team, and then I had some interactions with people that were paramedics, which started me on the path of EMS (emergency medical services) and getting my EMT (emergency medical technician) certifications, opening the door to a role as an emergency department technician. I was also a medevac dispatcher, so I kept finding myself in these high-stress, trauma-related scenarios. I would describe it as a “slow burn” over time to where I am now.

BASED ON YOUR EXPERIENCE ACROSS DIFFERENT LEVELS OF EMERGENCY MEDICINE, WHAT QUALITIES STAND OUT AS MOST IMPORTANT IN THE FIELD?

The most important qualities are the ability to stay calm in a storm and to treat a wide range of patients, from a 2-day-old baby to a 98-year-old Elder. My experience across different cultures—from Southcentral Alaska to Utqiagvik to rural Tennessee—has also shaped how I approach care and connect with patients.

WHAT INFLUENCED YOUR EDUCATIONAL JOURNEY, AND HOW DID YOU ULTIMATELY DECIDE WHICH PATH WAS RIGHT FOR YOU?

In December 2025, I finished my master’s degree in science and health care administration. EMS is hard on family life; the schedules are unpredictable, the shifts are long and most of the work is done on a volunteer basis. I kicked the can around on going to nursing school for many years, and

what ultimately clarified my direction was, I was completing a bachelor’s degree in psychology and applying to graduate school. I thought I might want to be an LPC (licensed professional counselor) or LCSW (licensed clinical social worker), working more in the clinical care setting than the acute care setting. I sat for several graduate school interviews, and I realized it wasn’t the path I wanted to be on. Within a month, I was enrolled in nursing school. I wanted to stay in something more tactile in my career; nursing was the best choice.

THE ALASKA NATIVE MEDICAL CENTER (ANMC) SERVES ALASKA NATIVE PEOPLE FROM ACROSS THE STATE. WHAT DOES WORKING IN THAT ENVIRONMENT MEAN TO YOU, BOTH PROFESSIONALLY AND PERSONALLY?

I’ve been at ANMC for 18 years. What I truly enjoy about ANMC is that it serves Alaska Native people and Tribes from across the state. We’re a hub, so I get to experience every culture to some extent, and that’s impactful and powerful.

I’m the director of nursing for the Emergency Services department. The beauty—and the challenge—of my job is that there is no “typical day.” I like the ever-changing nature of it; if I have a “typical day,” I’m not comfortable. I’ve grown within the department—I’ve been an ER tech, a charge nurse, a supervisor, a manager, and now I’m the director. Having experienced those tiers and knowing those roles, my day-to-day really comes down to asking: How do I make the system better for my staff and for the patients?

YOU’VE SPOKEN ABOUT ADVICE YOU RECEIVED EARLY IN YOUR CAREER ABOUT LEADERSHIP AND SCALE. HOW DID THAT SHAPE YOUR DECISION TO STEP INTO A LEADERSHIP ROLE?

In emergency medicine, you feel the immediate impact you can have at the bedside. Early in my career, a leader challenged me to think about scale—how many people you can reach in a day versus through leadership. That stuck with me.

Today, my department sees about 60,000 patients a year, and that responsibility feels personal. Stepping into leadership has been about improving care at that scale while also

helping grow the next generation and better serve populations that have traditionally been underserved.

WHAT DREW YOU TO APPLY FOR THE NUTYAH PROGRAM, AND HOW HAS IT SHAPED YOUR PERSPECTIVE ON LEADERSHIP AND COMMUNITY?

The Nutyah Program is an opportunity for leadership and professional growth and development, but it's also a way to give back to the community. I'm only a few months in, but the sessions have been remarkable. I'm learning a lot—about culture and about CIRI—that I hadn't fully appreciated.

The program has given me a broader perspective and aided my leadership development. We're all working with a coach, and part of that process is asking, "Where can we see you going in your career?" It's exciting and new for me to have that perspective, and I'm honored that I was selected.

My advice for anyone looking into the program is to just be yourself. When I interviewed, I told them, "I don't know much about the Corporation, and I've mostly been on the periphery when it comes to being involved with CIRI." But I also think about how I can do better for my children. My mother is on a similar path, wanting to reconnect with

culture. She's planning to go to Southeast Alaska this summer for the first time in probably 30 years, and I'm hoping to tag along. ✂



Did you know Andrew credits his participation in CIRI's 2021-2022 Virtual Mentoring Program with helping him achieve his professional goals?

EMPLOYEE SPOTLIGHT: ANDREW MEHALL

For CIRI Descendant Andrew Mehall (Dena'ina Athabascan and Aleut), numbers have always had a way of making sense.

A junior data scientist at CIRI subsidiary OSC Global, Andrew spends his days analyzing large data sets, building visualizations and translating information into insights leaders can use to make informed decisions. Put simply, his role is about helping people make sense of data.

"If you have a very big spreadsheet, you might not know what it's telling you," Andrew said. "I help people understand what they're looking at."

Andrew's path to the CIRI enterprise began with a summer call from Alaska. While visiting family in Ninilchik, where his family owns a cabin, he received an offer to intern with OSC Edge, a CIRI subsidiary that provides IT and cyber solutions to defense and federal agencies. The opportunity came at the right time, opening the door to a career grounded in data, technology and connection.

During his internship, Andrew worked with OSC Edge's OPTICA security team, organizing documentation and creating a scoring metric to help assess risk. The experience taught him the importance of organization, communication and staying aligned with a team.

Andrew's internship became a pathway to full-time work within the CIRI enterprise. After gaining experience with OSC Edge's teams and operations, he transitioned into a junior data scientist role with OSC Global, where the work expanded from task-focused internship projects to broader, higher-impact assignments.

"It was a really rewarding transition because it felt like a natural next step rather than a reset," Andrew affirmed.

Today, his work includes building models, developing executive dashboards, and supporting data-driven decision-making across operational and financial areas.



Andrew, who grew up in Maryland, earned a bachelor's degree in mathematics and statistics from Salisbury University. Math has been his favorite subject for as long as he can remember, and today that passion comes through in his work using data analysis, charts, graphs and other tools to turn numbers into clear insight.

Andrew's connection to CIRI is rooted in family. His mother, Tricia Mehall, is an original CIRI enrollee, and his family has long-standing ties to the Corporation. Although Andrew grew up on the East Coast, his family returns to Alaska each summer to reconnect with relatives and spend time at their family cabin in Ninilchik.

Building his career within the CIRI enterprise is meaningful to Andrew. "It means a lot," he said. "We want to bring value and give back through the work we do."

Andrew also credits CIRI's Virtual Mentoring Program (2021–2022), along with his manager, David Goodpaster, with helping him grow professionally. His advice to other Shareholders and Descendants interested in career opportunities is simple: keep going.

"Never give up," he said. "Wherever you start, that's not where you're going to end. You have time to shape your career. ✂

INTERACTIVE HERITAGE HUB

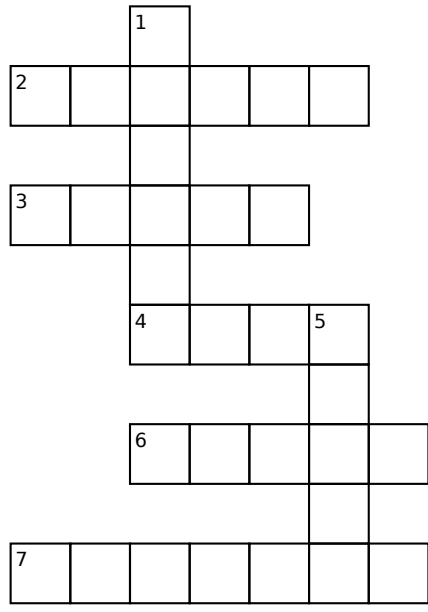
SALMON CROSSWORD PUZZLE

DOWN

1. A baby salmon with a yolk sac
5. Salmon return to rivers to do this

ACROSS

2. A fish that swims upstream to lay eggs
3. A long stream of water salmon swim in
4. Tools traditionally used to catch salmon
6. Where salmon live most of their adult life
7. A traditional way Alaska Native people preserve salmon



ANSWER KEY

1. ALEVIN
2. SALMON
3. RIVER
4. NETS
5. SPAWN
6. OCEAN
7. SMOKING

RECIPE

SALMON SPREAD

Submitted by CIRI Shareholders Darla and Nikki Graham (Yup'ik).

INGREDIENTS

- **Cream cheese** — 2 8-ounce packages
- **Smoked Alaska salmon** — 12 ounces, flaked
- **Sweet onion** — 2 tablespoons, grated
- **Fresh dill** — 2 tablespoons, chopped, plus more for garnish
- **Lemon juice** — freshly squeezed, to taste

DIRECTIONS

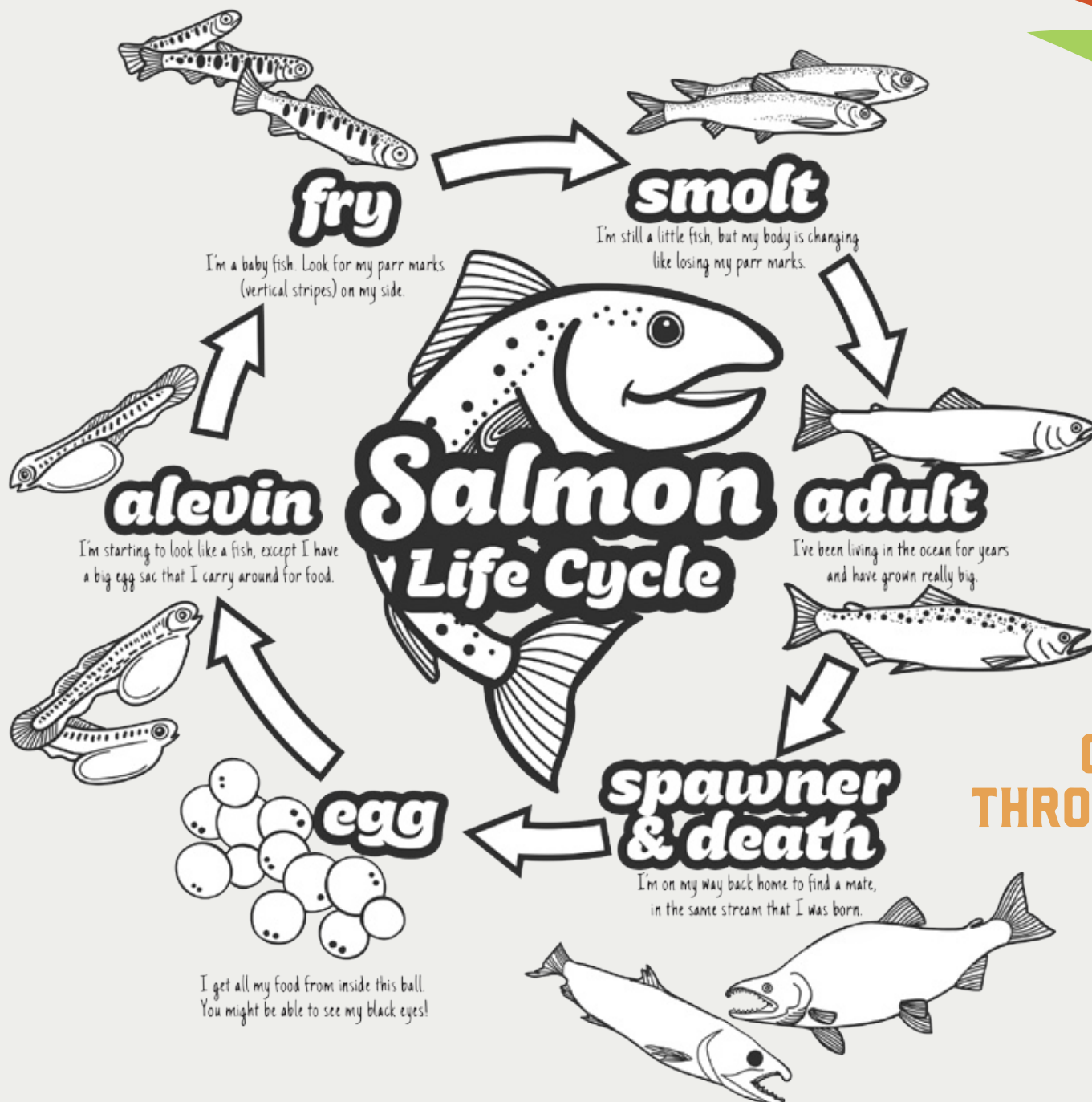
1. Let cream cheese come to room temperature.
2. Hand-mix cream cheese with smoked salmon.
3. Mix in dill and lemon juice.
4. Garnish with fresh dill. Serve with crackers or crostini.

Hi IT'S DELGGA, AND I HAVE A JOKE

What did the salmon detective say?

There's something *fishy* going on here...

Do you have a family-friendly joke to share? Email us at info@ciri.com for a chance for your joke to appear in a future edition of the Raven's Circle!



COLOR YOUR WAY THROUGH THE SALMON LIFE CYCLE!

VILLAGE VIBES WITH THE FUN UNCLE: CHICKALOON IS ARCHIVE-MAXXING

By John Sallee

Hey, nieces, nephews, Shareholders and Descendants, and everyone in between—your Fun Uncle is back with Village Vibes, and this time we’re talking archives.

No, not “dusty box in a basement” archives. The Chickaloon Native Village is not just filing papers; they’re culture-referencing, history-reclaiming and digital archive-maxxing.

In 2025, the Chickaloon Village Traditional Council’s (CVTC) culture and historic preservation department was awarded a \$100,000 Community Archives grant from the Mellon Foundation to support the Nay’dini’aa Na’ Kayax Łudołniit, or Chickaloon Native Village Self-Sufficiency Project.

Under the direction of project lead Selena Ortega Chiolero, the project is part digital archive, part cultural restoration effort and part community-guided knowledge platform. CVTC is creating a Tribally stewarded database called Ugheldze’ Hwle Cilaes, or “Sharing and Caring: Information We Share,” to organize photos, recordings, documents and cultural materials connected to Ahtna culture, language and community knowledge. Basically, it’s giving ancestral knowledge, but with a search bar.

The database will be housed and stewarded by the Tribe, with different levels of community-guided access to respect

cultural protocols. A tentative public launch is planned for 2027, with CVTC sharing more through its communication channels once complete.

The goal is straightforward but ambitious: bridging cultural knowledge into the digital landscape in a way that feels useful, respectful and community-rooted — less “museum basement,” more “living knowledge with Wi Fi.”

The platform will draw from each Alaska Tribe’s own words, dictionaries and approved spellings, ensuring the community determines how its language is represented. Technology supports the work without replacing that authority.

Think of it as one digital home for Chickaloon Native Village’s permanent collections, plus Ahtna Dene materials that may currently be held in museums, archives and repositories around the world. Because let’s be real: cultural knowledge should not be on a world tour forever (sorry, Swifties).

The digital revitalization platform will blend Indigenous stewardship practices with contemporary archival methods—a fancy way of saying the community helps guide how these materials are cared for, accessed and understood.

For younger generations, that matters. Culture is not just behind glass or in a textbook; it’s living and breathing, sometimes waiting in a digitized folder for someone to say, “That’s my cousin!”

Here’s to Chickaloon Native Village—bringing knowledge home, one archive at a time. Cultural memory: secured. And the spirit behind it? Alive and well. 🌿



‘MOLLY OF DENALI’ SALMON HATCHERY VISIT

Learn how salmon grow and return home in this “Molly of Denali” video—scan the QR code to explore!



IN MEMORY



DARLIE KALERAK, 86

Darlie Kalerak passed away Sept. 20, 2025, in Anchorage. Ms. Kalerak was born Aug. 2, 1939, in Solomon, Alaska. She is survived by her children, Steve Labno (Peggy), Thomas Labno Jr. (Jeanie) and Roberta Day (late Steven); grandson, Curtis Tucker; sibling, Ruth Kalerak; and many other family and friends.



JOHN WAYNE KODIAK, 64

John Wayne Kodiak passed away Jan. 30. He was born Sept. 23, 1961, in Santa Clara, Calif. He is survived by his wife, Lori; and siblings, Wayne, Kathy and Bill Mantor.

FRANK COREY, 80

Frank Corey passed away Jan. 27 in Anchorage. Mr. Corey was born April 8, 1945, in Palmer, Alaska. He is survived by his siblings, Daniel Corey, Edith Baller and Gertrude Corey Anderson; and great-niece, Gabrielle Bentti.

CONDOLENCES

Katherine Christina Atkins, 96
Susan Kee Benyish, 68
Charlotte Ann Bristow, 61
Leonard Michael David, 67
Edward Jay Demoski, 55
Michael Anthony Dumesnil, 75
Carol Ann Endresen, 75
Brenda Joy Ewers, 75
Marlene Ester Gillispie, 67
Glenn Jay Hagberg, 64
Glenn Daniel Irby, 61
Mary E. Ireton, 77
Rose Marie Gertrude Joe, 60
Alfred Charles Jones, 62
Mary Jean Longley, 86
Donald Ray McClelland Sr., 86
John Carter Matthews, 62
Barbara Langfritz McNair, 85
Lena Pauline Oksoktaruk-Wood, 72
Arnold Elli Oskolkoff, 88
Nancy Jo Pickett, 69
Marleah Alice Robinson, 72
Flora T. Rock, 77
Daniel Roehl, 95
Richard Alan Ross, 50
Donald Shaginoff, 86
Cheryl Jean Shane, 67
Roger Wayne Stewart, 65
Joshua Sly, 51
Vanita Pearl Thurmond, 87
William Randolph Vallee, 68
Dale Darwin Vaughn, 63
Yvonne P. Whalen, 85
Thomas William Yorkston, 66

CIRI MOURNS THE PASSING OF MONROE E. PRICE

BY ROY HUHDORF AND MARGIE BROWN

Monroe E. Price, a law professor specializing in Native American law and a legal advisor to CIRI during the Cook Inlet Land Exchange, passed away March 16 in New York. He was 87.

The Alaska Native Claims Settlement Act of 1971 gave CIRI title to 1.25 million acres of surface estate and 2.25 million acres of subsurface estate within the Southcentral Alaska region. Situated in the most populated part of the state, CIRI was faced with the reality that much of the land in the region was already in private hands, set aside for the state, owned by the military or off-limits for parks and wildlife, leaving “glaciers and mountaintops” for land entitlement selections.

With no recourse to resolve the deficient land selection issue with the Department of the Interior, CIRI hired a local firm to pursue litigation. At the firm’s recommendation, CIRI retained Price, whose reputation in advancing Native American law was already well established. At the time, Price held a faculty position at the UCLA School of Law.

Price was an instrumental member of the negotiating team that produced CIRI’s landmark land exchange, the Terms and Conditions for Land Consolidation and Management in the Cook Inlet Area, otherwise known as the Cook Inlet Land Exchange.

Signed into law in 1976, the settlement—a three-way land exchange among CIRI, the State of Alaska and the federal government—helped lay the foundation for CIRI’s future successes, including a solid financial grounding.

Reflecting on the Cook Inlet Land Exchange in 2016, 30 years after passage of the settlement, Price said that CIRI “did in fact do something, which I think was not true of any other Native corporation in Alaska. Instead of having the government define what assets would be the birthright of the corporation, [CIRI] decided what would be its dowry and birthright and obtained the agreement with the U.S. Congress, the Alaska legislature and several courts.”

Price’s innovation and creativity at a critical time in CIRI’s history was an instrumental part of CIRI’s success. In honor of his contributions, CIRI is establishing a named scholarship through The CIRI Foundation for students pursuing a law degree. 🎓

CIRI Shareholder Roy Huhndorf (Yup’ik) is a former CIRI president and CEO (1972-1998) and former CIRI Board Director. CIRI Shareholder Margie Brown (Yup’ik) is a former CIRI president and CEO (2005-2013) and current CIRI Board Director.



IN TOUCH



COLLEGE GRADUATION

Tracy Cooper is pleased to announce the graduation of her daughter, Roberta Cooper, from Embry Riddle Aeronautical University in Prescott, Ariz. Roberta earned a bachelor's degree in astronomy with a minor in humanities. She is the granddaughter of the late William and Linda Anselm of Unalakleet and the daughter of Tracy Cooper of Unalakleet and the late Robert Gilley of Princeton, W.Va.



HISTORICAL NOVEL PUBLISHED

Congratulations to Molly Hootch Hymes on the publication of her newest book "Where the Black Fish Swims" (2025). This historical novel tells the story of Molly's grandfather, Charlie Hootch, who grew up along the Kuskokwim River and was forced to flee with his family during the 1918 flu epidemic, traveling by dogsled through winter conditions. Their journey ultimately led to Charlie becoming one of the early settlers of Emmonak, Alaska. The book is available for purchase on Amazon and from Publication Consultants, an Anchorage-based publishing company.



ACADEMIC ACHIEVEMENT

Congratulations to Tanisha Gleason on a significant academic achievement at the University of Alaska Anchorage (UAA). While pursuing her undergraduate degree in political science, Tanisha earned Outstanding College Resolution at UAA's recent Model United Nations Conference, competing among more than 150 students from area high schools, UAA and the University of Alaska Fairbanks. Representing the Iñupiaq people, her award-winning resolution addressed Missing and Murdered Indigenous Women and Girls. In recognition of her work, Tanisha was selected to represent UAA at the Model United Nations of the Far West Conference, held April 17-21 in San Francisco.



CONFERENCE SPEAKER

Congratulations to CIRI Shareholder and employee Tayler Higgins, who attended the 2026 Native Americans in Philanthropy (NAP) Conference, held April 14-16 in Riverside, Calif., alongside CIRI Shareholder and Board Director Carol Gore. Tayler served as a youth speaker at the conference, sharing the importance of investing in Indigenous youth leadership and bringing resources back to our communities. The NAP Conference brings together leaders from across the country to advance giving and partnership in Indigenous communities.



COMMUNITY IMPACT

Lydia Heyward was recently featured on Influential Women, a platform highlighting women who inspire connection and positive change. A retired special investigator with experience addressing abuse, neglect and death investigations, Lydia has dedicated her career to serving vulnerable populations, particularly in Alaska's Indigenous communities. She has served on the Governor's Council on Missing and Murdered Indigenous People and the Alaska Council on Domestic Violence and Sexual Assault, and emphasizes hands-on service, mentorship and long-term commitment as essential to creating lasting change. Read Lydia's full profile: influentialwomen.com/connect/lydia-heyward



PROMOTION

Congratulations to Joel Isaak on his promotion to Tribal operations director for the Kenaitze Indian Tribe. In his new role, Joel will continue supporting the important work of the Tribe while helping carry forward Dena'ina language, culture and community connection. Joel, the son of Sharon and David Isaak, has worked with the Tribe for 12 years, as both a contractor and employee. He most recently served as the Tribe's cultural preservation and language director.



BIRTH ANNOUNCEMENT

Lisa Siegert Thompson is pleased to announce the birth of her grandson, Anakin Leon Cameron, born Oct. 12, 2025. Little Anakin is the great-grandson of Pauline Farrell, the great-great-nephew of Geri Cooper, and the son of Nicholas Farrell and his wife Chloe. He was lovingly welcomed by his siblings, Izabella and Paxton; grandparents, Tasha and Mark Jones; and grandfather, Chuck Cameron.



CHILDREN'S BOOK PUBLISHED

Suzanne Urban is pleased to share the release of her newest children's book, "Nuka and His Aapa." The story celebrates the special bond between a young boy and his grandfather while honoring Iñupiaq heritage, faith and the wisdom passed from one generation to the next. Through everyday moments, the story highlights themes of identity, belonging and the lasting influence grandparents have on a child's life. The book is available for purchase on Amazon.



COLLEGE GRADUATION

Congratulations to Pastor Suzanne Urban, who earned a bachelor's degree in biblical and theological studies. She was recognized in royal blue regalia and honored her Iñupiat heritage with a traditional stole, moccasins and earrings. She plans to continue her education toward a Master of Divinity.



PROMOTION

Congratulation to Brittany Daletas, who was recently promoted to vice president of operations at Bering Straits Native Corporation. In her new role, Brittany helps lead operational improvement efforts across the corporation, focusing on strengthening cross-functional alignment, improving efficiency and supporting strategic initiatives that position BSNC for continued growth. Brittany is the daughter of Martin and Janette Brown and the granddaughter of Ethel Komakhuk. She serves on the CIRI Participation Committee and volunteers with the Alaska Make-A-Wish Event Committee, supporting efforts that strengthen community connections and help grant wishes for children.

2026 BOARD ELECTION RESULTS

Thank you to everyone who participated in the 2026 election of CIRI Directors!

Preliminary results show that CIRI Shareholders elected the following five Directors at the 2026 CIRI Annual Meeting, held June 6 in Anchorage: **John J. Estabrook Jr., Carol A. Gore, Lisa K. Huffman, Cheryl L. Mulcahey** and **Samuel G. Spangler**. All will serve three-year terms ending June 2029.

The Board convened after the Annual Meeting and elected the following Board officers:

CHAIR:
DOUGLAS W. FIFER

VICE CHAIR:
SAMUEL G. SPANGLER

SECRETARY:
CYNTHIA L. MULLER

ASSISTANT SECRETARY:
LISA K. HUFFMAN

TREASURER:
CHERYL L. MULCAHEY

ASSISTANT TREASURER:
JOHN J. ESTABROOK JR.

CHAIR EMERITUS:
THOMAS P. HUHDORF



VISIT CIRI.COM

Our website has a fresh new look! The relaunched ciri.com offers a more modern design, improved navigation and easier access to the information that matters most to our Shareholders, Descendants and other stakeholders. Take a moment to explore the refreshed site and see what's new!

2026 ANNUAL MEETING PRIZE WINNERS

eVOTE PRIZE WINNERS

Shareholders were given the option of completing an electronic proxy (eProxy) using CIRI's web-based proxy system. In 2026, a total of \$15,000 in eVote prizes were awarded. In addition, if submitted by the appropriate deadlines, eProxies qualified Shareholders for both the 2026 eVote prizes and Early Bird prize drawings.

Date of Prize	Name	Location	Amount
5/8/2026	Mary Miller	Batavia, IL	\$1,000
5/8/2026	Clifford Gregg	Anchorage, AK	\$1,000
5/8/2026	Christopher Todd	Anchorage, AK	\$1,000
5/8/2026	Chad Bouwens	Eagle River, AK	\$1,000
5/8/2026	Kim Hopkins	Boise, ID	\$500
5/8/2026	Melody Griggs	Gig Harbor, WA	\$500
5/8/2026	Tristen Malutin	Kodiak, AK	\$500
5/8/2026	Cynthia Petterson	Kenai, AK	\$500
5/15/2026	Dorothy Philbrick	Anchorage, AK	\$1,000
5/15/2026	Megan Amidon	Anchorage, AK	\$1,000
5/15/2026	Judith Butler	Fairbanks, AK	\$1,000
5/15/2026	Samuel Stokes	Ninilchik, AK	\$500
5/15/2026	Gerald Gularte	Anchorage, AK	\$500
5/22/2026	Martin Campbell	Maryville, MO	\$1,000
5/22/2026	Taryn Shane	Palmer, AK	\$500
5/22/2026	Christine Redick	Anchorage, AK	\$500
5/22/2026	PENDING	PENDING	\$500
5/22/2026	Timothy Moore	Pahrump, NV	\$500
5/26/2026	Tasha Demit	Northway, AK	\$500
5/26/2026	Dax Panamarioff	Anchorage, AK	\$500
5/26/2026	Robert Howard	Ashland, OR	\$500
5/26/2026	Tiffany Deason	Anchorage, AK	\$500

EARLY BIRD PRIZE WINNERS

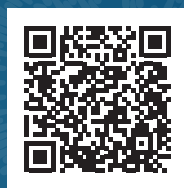
A quorum is the minimum number of members or shares that must be represented at a meeting to make the proceedings of that meeting valid. To ensure a quorum is achieved for the Annual Meeting of Shareholders, CIRI's Early Bird Prize drawings reward Shareholders who submit a valid proxy for any proxyholder or candidate by certain dates in advance of the meeting. In 2026, a total of \$12,000 in Early Bird Prizes were awarded.

Date of Prize	Name	Location	Amount
5/8/2026	Edwin Toshavik	Anchorage, AK	\$1,000
5/8/2026	Nancy Dilley	Whittier, AK	\$1,000
5/8/2026	Shawna Steele	Flower Mound, TX	\$1,000
5/8/2026	Carmen Blair	Burien, WA	\$1,000
5/8/2026	Mark Fitzhugh	Soldotna, AK	\$500
5/8/2026	Virginia Hudson	Anchorage, AK	\$500
5/15/2026	Warren Huff	Homer, AK	\$1,000
5/15/2026	Trinket Gallien	Seldovia, AK	\$1,000
5/15/2026	Gertrude Anderson	Palmer, AK	\$1,000
5/15/2026	Cristina Day	Anchorage, AK	\$500
5/15/2026	Leanne O'Halloran	Anchorage, AK	\$500
5/22/2026	David Gonnason	Hillsboro, OR	\$1,000
5/22/2026	Tiffany Clark	Nome, AK	\$500
5/22/2026	Norman Carlo Sr.	Galena, AK	\$500
5/22/2026	James Black III	Anchorage, AK	\$500
5/22/2026	Sari Shepard	Wasilla, AK	\$500



SHAREHOLDER + DESCENDANT PROGRAMS

At CIRI, our Shareholder + Descendant Programs department is committed to uplifting our people by fostering connection, learning, and growth at every age and life stage. From youth enrichment to Elder engagement, and from cultural exploration to career development, we aim to serve our diverse community—wherever you live and however you identify.



Watch “CIRI in Action” to see
this work brought to life!

MARK YOUR CALENDAR FOR THE FOLLOWING PROGRAMS AND OPPORTUNITIES

PHOTO CONTEST

ENTRY WINDOW: JULY 17 – AUG. 16

Shareholder and confirmed Descendant photographers ages 10 to adult are invited to submit original photographs interpreting the theme “In Perspective.” Photographs must be 1MB or larger and ideally landscape orientation. Winning photographers will receive cash prizes up to \$500 and have their entries displayed at CIRI’s fall Friendship Potlatches. Certain photographs may also be selected for the 2027 CIRI calendar!



Scan to view all
CIRI program offerings

Did you know CIRI offers a
variety of programs that support
shareholders and descendants while
honoring and strengthening our
shared culture and heritage?

VIRTUAL MENTORING

MENTOR RECRUITMENT: AUG. 14 – SEPT. 13

Cultivate your interpersonal and coaching skills, connect with other professionals and help develop the next generation of Alaska Native leaders! Mentors may be CIRI Shareholders or Descendants, other Alaska Native people or professionals from the broader community. Since this is a virtual program, participants may live anywhere in the U.S.

MENTEE RECRUITMENT: OCT. 9 – NOV. 8

Mentees receive customized education/career coaching, develop professionally and personally, engage in Alaska Native cultural activities, identify goals and achieve success. Mentees may choose among CIRI-selected mentors for their preferred pairings. The opportunity is open to CIRI Shareholders and confirmed Descendants ages 18+. As the program is held virtually, participants may live anywhere in the U.S.



THIRD QUARTER DISTRIBUTIONS

Payment Type	Direct Deposit & Change of Address Deadline: 3 p.m. AKDT	Distribution Date
Third Quarter CIRI Trust Elders Distribution	September 2, 2026	September 11, 2026
Third Quarter CIRI Trust Distribution	September 16, 2026	September 30, 2026

ELDER DISTRIBUTIONS

Funds will be mailed or directly deposited by 6 p.m. AKDT on Friday, Sept. 11, to eligible Elders with a valid mailing address on file as of 3 p.m. AKDT on Wednesday, Sept. 2. CIRI Settlement Trust (CIRI Trust) beneficiaries who are original CIRI Shareholders and are 65 years of age or older on the record date of Sept. 9, 2026, are eligible to receive the \$600 payment, providing they either own at least one share of CIRI stock or gifted all their CIRI stock to family members prior to July 31, 2003.

SHAREHOLDER DISTRIBUTIONS

Third quarter payments from the CIRI Trust Distribution Fund, in the amount of \$11.52 per share (or \$1,152 per 100 shares), will be mailed or directly deposited by 6 p.m. AKDT on Wednesday, Sept. 30, to all CIRI Trust beneficiaries who own CIRI stock and have a valid mailing address on file with CIRI as of 3 p.m. AKDT on Wednesday, Sept. 16.

DIRECT/REMOTE DEPOSIT

CIRI urges Shareholders who receive their distributions in check form to consider signing up for direct deposit or taking advantage of remote deposit. Both options are fast, easy and environmentally friendly, and funds are deposited the same day checks are mailed, eliminating mail delays and trips to the bank. (Note: When remotely depositing a check, it's a good idea to make a note on the check so you don't attempt to cash it again. If a check is cashed twice, you are legally liable to repay the amount of the overpayment.)

Shareholders who participate in direct deposit and have a mailing address current with CIRI

are also eligible to participate in quarterly prize drawings. Direct deposit forms are available from Shareholder Relations and at ciri.com. To cancel direct deposit, contact Shareholder Relations and submit a signed, written request prior to 3 p.m. Alaska Time on the specified deadline. If you have a Qenek account, you may cancel your existing direct deposit instruction online via the portal.

ADDRESS CHANGES

Checks are mailed to the address CIRI has on record as of the specified deadline. If your address has changed, be sure to update your address with both CIRI and the U.S. Postal Service. These addresses must match, or your CIRI mail may not reach you. When CIRI mail is undeliverable, distributions are held, and the Shareholder does not qualify to participate in any prize drawings until the address is updated. This is true even if a Shareholder is signed up for direct deposit.

CIRI address changes may be submitted online via the Qenek portal. Alternatively, you may submit a completed CIRI address change form—available at ciri.com—or a signed, written request that includes a current telephone number. You may scan or take a photo of your completed form or request and email it to shareholderrecords@ciri.com; text it to (907) 263-5191; mail it to CIRI at P.O. Box 93330, Anchorage, AK 99509; or fax it to 1 (907) 263-5186. If faxed, please call Shareholder Relations as soon as possible to confirm receipt. Forms and information on changing your address or submitting a mail-forwarding request with the U.S. Postal Service are available at usps.com or your local post office.

Please be aware that if you fail to notify CIRI of a new address before a specified deadline and your check is sent to your previous address, CIRI cannot reissue that check to you unless it is either returned to us or a minimum of 90 days has elapsed. A list of Shareholders who do not have a current mailing address on record is continually updated and may be found at ciri.com.

TAX REMINDER

Neither CIRI nor the CIRI Trust withhold taxes from distributions; however, Shareholders or beneficiaries who anticipate owing tax on their distributions have the option of making quarterly estimated tax payments directly to the IRS. To find out more about applicable federal and state tax requirements or making quarterly estimated tax payments, please consult with a tax advisor or contact the IRS directly. As a reminder, distributions made by the CIRI Trust are expected to be tax-free to beneficiaries in most cases.

CONTACTING US

The Fireweed Business Center is open to Shareholders, Descendants and visitors from 8 a.m. to 5 p.m. (Alaska Time) Monday through Friday. The Shareholder Relations department may also be reached by phone at (907) 263-5191 / (800) 764-2474 and via email at shareholderrecords@ciri.com during normal business hours. Additionally, the Qenek portal provides access to a wealth of news and information and allows many tasks and record changes to be completed online, including generating payment confirmations and reprinting tax forms. 📄

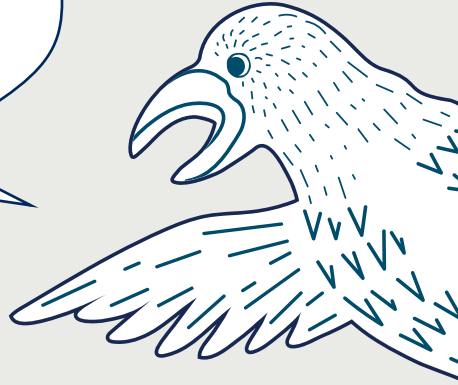


MEET OUR SUMMER INTERNS!

Staff and leadership welcomed our 2026 summer interns at an orientation, held June 9 at CIRI's Anchorage office. From left: Kyla Morris (Aleut), senior director, stakeholder engagement; President Tabetha Toloff (Athabaskan); CEO Swami Iyer; Jackson Withers (Aleut), information technology intern; Hayden Estabrook (Athabaskan), human resources intern; Alexia Wright (Athabaskan, Yup'ik), legal intern; Rita Huhndorf-Lima (Yup'ik), Alaska Native Heritage Center intern; Ryder Felton (Tlingit), OSC Global intern; Michael Thomas (Tlingit), Shareholder + Descendant programs intern; and Luke Branson (Athabaskan), corporate communications intern.

Photo by Jordyn Ransom
June 6, 2026.

Did you know NUYAH means
"it is growing" in the DENA'INA
ATHABASCAN LANGUAGE?



IMPORTANT DATES

JUNE 29 – JULY 3, 2026

Summer sabbatical: CIRI offices closed

JULY 4, 2026

Independence Day

AUG. 16, 2026

CIRI Photo Contest entry deadline

SEPT. 2, 2026

CIRI Trust Elders distribution: direct deposit and change of address deadline

SEPT. 7, 2026

Labor Day: CIRI offices closed

SEPT. 11, 2026

CIRI Trust Elders distribution

SEPT. 13, 2026

CIRI Virtual Mentoring Program: mentor recruitment deadline

SEPT. 16, 2026

CIRI Trust Shareholder distribution: direct deposit and change of address deadline

SEPT. 30, 2026

CIRI Trust Shareholder distribution; quarterly participation prize drawing deadline; Orange Shirt Day

NUYAH ORIENTATION

The Nuyah Program inaugural cohort gathered virtually and in person for orientation, where they connected with CIRI President Tabettha Toloff (Athabascan) and fellow cohort members, learned more about the program and mapped out the months ahead. Designed for mid-career Shareholder and Descendant professionals, the Nuyah Program is an executive-led, learning and mentorship program. Through the program, participants learn to lead in ways that reflect CIRI's core values—embracing ethical decision-making, collaboration, and purpose-driven leadership that can be applied in any organization or career path.



APU CLASS

CIRI Shareholder Cy Two Elk (Athabascan/Oglala Lakota) leads an Alaska Pacific University class focused on building organizational capabilities for change. CIRI CEO Swami Iyer and CIRI President Tabettha Toloff (Athabascan) joined the class as guest lecturers, sharing insights on Alaska Native corporations, leadership, and navigating change with students in the ANTHC Leadership Excellence through Advancement and Determination (LEAD) cohort.

Photo by John Sallee
Feb. 6, 2026.



SHAREHOLDERS WITH RETURNED MAIL

CIRI works to maintain accurate records to ensure Shareholders are receiving the benefits they are entitled to. When CIRI mail is returned as undeliverable, distributions are held, and the Shareholder does not qualify to participate in any prize drawings until the address is updated. Below is a list of Shareholders on CIRI's returned mail list.

(As of 6/9/2026)

Alana Allen-Spencer
David Allowan
Mikeael Anderson
Allan Baldwin
Daevin Barnes
Barbara Basas
Kristopher Bayes
William Blagg
Leann Blakley
Toni Bradford
Katrina Burgoyne
Janice Buzby
Danna Chapman
Daisy Clark
Michael Clark
Christina Clemmons
Maybelle Cowger
Katherine Cox
Warren Crosby
Jason Dannelik
Edna Davidson
Desiray Davis
Roberta Degenhardt
Miranda Ditullio
Olga Edwards-Albert
Gerald Elderkin
Kathy Evans
Natasha Fecteau Minger
Robert Flanders
Jeffrey Fleek
Daniel Fry
Nena Fuller
Marisa Garrett
Jeremiah Gramer
Travis Gularte
Ernesto Gutierrez
Nathan Hamilton
Eugene Hardy
Renee Harp
Justin Hatton
Robert Haynes
Joseph Henderson-Shook
Seanna Huffman
Angela Hyatt
Teresa Jennings
Suraiya John
Melissa Jones
Susan Jones
Mary Joubert
Angela Junell
Keegan Kanan
Kristine Kienberger
Dolly Kiyutelluk
Frederick Kraft
Charles Labarbera
Paula Labarbera
Rita Lopez
Bill Mantor
Lorraine Mantor
Krystiana Mark

Aaron Mells
Paul Meza
Lillian Mokolke
Ruthie Monroe
Lisa Morgan
Einer Mosquito
Kimberly Mosquito
Roger Mosquito
Alec Norman
Santos Noyakuk
William Ondola
Karen Otton
Judith Owens
Louis Ozenna
Cody Pedersen
Jamie Peterson
Ruth Peterson
Grace Pickett
Atum-Heru Qetlah
Jay Rapoza
Daniel Reeder
Neil Rodriguez
Jerry Ross
Raya Rummer
Wyatt Saccheus
Curtis Sattler
Jeffery Scalph
Mark Shettters
Tonya Shuravloff
Cynthia Skidmore
Jennifer Slater-Sursa
Andrew Smith
Chyna Smith
Herbert Smith
Linda Smith
Paul Smith
Phyllis Smith
Nicole Standifer
Rachael Stanford
Jeanna Stay
Enoch Stevens
Benu Stewart
Jesse Stewart
Larry Theodore
Al Thomas
Christopher Thomas
Victoria Thomas
Harold Turner
Nathaniel Tuttle
Harry Watson
Travis Weesner
Dominic Wheeler
Jamieson Williams
Randy Wilson
Victor Wilson
Dale Woodhead
Deaunna Wraith
Machelle Yankovic
Emily Young

CIRI BOARD OF DIRECTORS

Douglas W. Fifer, *Tlingit*
Chair*

Thomas P. Huhndorf, *Yup'ik*
Chair Emeritus*

Samuel G. Spangler, *Aleut*
Vice Chair*

Cynthia L. Muller, *Haida*
Secretary*

Cheryl L. Mulcahey, *Iñupiaq*
Treasurer*

Lisa K. Huffman, *Athabascan*
Assistant Secretary*

John J. Estabrook Jr., *Athabascan*
Assistant Treasurer*

Margaret L. Brown, *Yup'ik*

Gregory L. Craig, *Iñupiaq*

Jeffrey A. Gonnason, *Haida*

Carol A. Gore, *Aleut*

Charles M. Lee Jr., *Tlingit*

Louis Nagy Jr., *Yup'ik*

Cale V. Tolbert, *Athabascan*

Kaarlo K. Wik, *Aleut*

* Denotes a member of the Board of Trustees of the CIRI Settlement Trust



P.O. Box 93330
Anchorage, Alaska 99509-3330

CIRI CONTACT INFORMATION

CIRI Headquarters

725 E. Fireweed Lane, Suite 800
Anchorage, Alaska 99503
Tel. (907) 274-8638
www.ciri.com

Shareholder Relations

Tel. (907) 263-5191 or (800) 764-2474
Fax (907) 263-5186
Email shareholderrecords@ciri.com

For estates/wills, contact Probate at:

Tel. (907) 263-5540 or (833) 263-5136
Fax (907) 263-5186

Submit ideas, stories & recipes to info@ciri.com



SUMMER 2026 // CIRI RAVEN'S CIRCLE NEWSLETTER

EDITOR: CARLY STUART // LAYOUT AND DESIGN: YUIT COMMUNICATIONS // © CIRI, 2026



PRESORTED
FIRST-CLASS MAIL
U.S. POSTAGE
PAID
PERMIT NO. 257
ANCHORAGE, AK

WINNERS' CIRCLE

To increase participation in certain programs, CIRI holds periodic prize drawings from the names of those enrolled who meet certain criteria and have a current mailing address on file with CIRI. If CIRI has returned mail, a different winner will be selected.

Call Shareholder Relations at (907) 263-5191 or (800) 764-2474 to learn more. The following Shareholders and Descendants have been selected as winners for the most recent CIRI drawings:

DIRECT DEPOSIT DRAWING

First quarter drawing for \$250:
– ANNIE MOYNIHAN

The direct deposit instruction must be current with CIRI to win.

CONFIRMED, REGISTERED DESCENDANT DRAWINGS

First quarter drawing for a \$100 gift cards:
– EMMA MONTAGNA (ADULT)
– DAWSON MCGINNIS (YOUTH)

Direct lineal Descendants of CIRI Shareholders who are not themselves Shareholders, who have submitted legal documents substantiating descent and who have a valid email address on file.

QENEK ACCOUNT DRAWING

First quarter drawing for a \$250 gift card:
– TONY WILLIAMS

Shareholders and confirmed Descendants who have created a Qenek account or accessed an existing account during the preceding quarter.

GREENLINK DRAWING

First quarter drawing for \$100:
– MITCHELL SOARES

Shareholders who have a valid direct deposit instruction and email address on file and who have opted into electronic delivery of certain materials.

SAVE THE DATE: 2026 FRIENDSHIP POTLATCHES

CIRI's fall Friendship Potlatches offer CIRI Shareholders and Descendants an opportunity to socialize and celebrate important cultural traditions with family and friends. The program includes cultural entertainment, children's activities, Alaska Native arts and crafts booths, door prizes and a meal that includes traditional Alaska Native foods. Potlatches are open to CIRI Shareholders, confirmed Descendants and their immediate family members (spouse, children and parents). The wearing of traditional regalia is encouraged!

ANCHORAGE

Saturday, Oct. 17
ChangePoint Church
6689 ChangePoint Drive
Anchorage, Alaska

PACIFIC NORTHWEST

Saturday, Nov. 7
Lynnwood Event Center
3711 196th Street Southwest
Lynnwood, Wash.

KENAI PENINSULA

Sunday, Oct. 25
Soldotna Field House
526 Arena Avenue
Soldotna, Alaska

If you are a CIRI Shareholder or confirmed Descendant who is interested in selling or displaying arts and crafts, please email artist@ciri.com or call (907) 263-5502 for information and to reserve space.